



**USER MANUAL**

Hazardous Materials Work Stations



# GAP LINE



GAP095.090.060  
GAP095.120.060  
GAP095.150.060  
GAP095.180.060  
GAP095.210.060  
GAP095.240.060



GAP095.090  
GAP095.120  
GAP095.150  
GAP095.180  
GAP095.210  
GAP095.240



GAP125.090.060  
GAP125.120.060  
GAP125.150.060  
GAP125.180.060  
GAP125.210.060  
GAP125.240.060



GAP125.090  
GAP125.120  
GAP125.150  
GAP125.180  
GAP125.210  
GAP125.240



GAP125.090.WA  
GAP125.120.WA

# OPERATING INSTRUCTIONS

Dear customer,

These operating instructions are for practical use and should be available to the user where the hazardous material workplace is to be used.

Please keep these operating instructions close to the unit. An assured, faultless functioning of the hazardous material workplace is only ensured when these instructions are followed. Do take note of the safety information.

Many thanks.

Your asecos team

1. NOTES ▪ GUIDELINES ▪ GUARANTEE .....	4
1.1. General safety notes .....	4
1.2. Guarantee .....	4
1.3. Details .....	4
2. ERECTION ▪ COMMISSIONING .....	4
2.1. Assembly of the support frame (width up to 1800 mm) .....	4
2.2. Assembly of the support frame (width 1800 mm) .....	5
2.3. Assembly of front and side panel .....	6
2.4. Alignment of the workplace .....	6
2.5. Commissioning .....	6
3. FUNCTION .....	7
3.1. Mode of operation .....	7
3.2. Optional media duct/media socket .....	8
4. VENTILATION ADJUSTMENT ▪ MONITORING .....	9
4.1. Ventilation .....	9
4.2. Monitoring .....	9
5. MALFUNCTIONS ▪ ACTIONS .....	10
6. CONNECTION TO A MEDIA SUPPLY .....	10
6.1. Connection in the media duct .....	10
6.2. Connection in the media socket .....	10
7. FUNCTIONAL CHECK ▪ MAINTENANCE ▪ CARE .....	11
8. TECHNICAL DATA .....	13

## 1. NOTES - GUIDELINES - GUARANTEE

### 1.1. GENERAL SAFETY NOTES

- Observe the notes in these operating instructions!
- Observe applicable statutes and regulations, and the notes in these operating instructions, when handling hazardous materials
- Observe accident prevention regulations and workplace ordinance
- **Ensure that the necessary safety checks are only carried out by authorised staff using original spare parts**
- Only use the hazardous material workplace in a proper condition
- Make sure that there are no air currents above 0.2 m/s when selecting the place of erection as this can affect the functional ability.
- The users are to be trained on handling of the hazardous material workplace
- The required exhaust air flow is to be provided on site
- Observe the maximum weight with which the cabin may be loaded
- Any hazardous materials that escape must immediately be collected and removed
- Please check the material resistance of all surfaces for the use of aggressive materials.
- The instructions of the supervisory engineering department must be followed.

### 1.2. GUARANTEE

The guarantee for this product is agreed between you (the customer) and your dealer (the seller). As the manufacturer, asecos guarantees the products listed in the operating instructions for a period of 24 months from the date of delivery. All model safety equipment are subject to a compulsory annual inspection by specialised staff authorised by the manufacturer. Otherwise the customer's guarantee claim against the manufacturer expires.

### 1.3. DETAILS

**Development: asecos GmbH Sicherheit und Umweltschutz, D-63584 Gründau.**

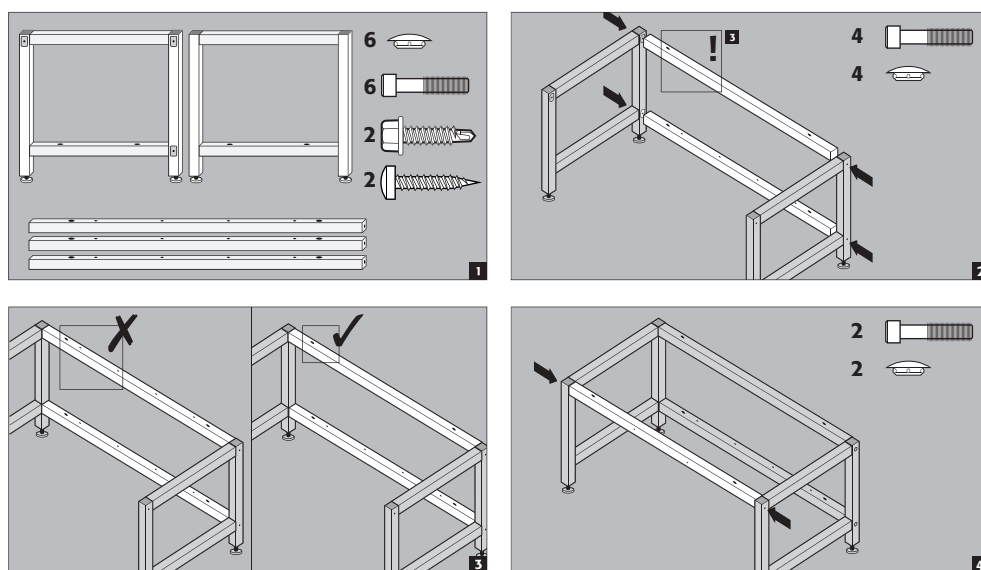
<b>Serial No.</b>	type plate inside on top of the work station
<b>Technical drawings</b>	appendix 1
<b>Technical documentation</b>	appendix 2

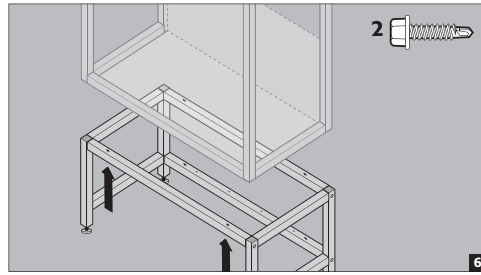
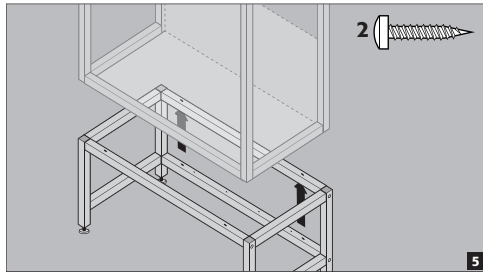
#### **Hazardous material workplace GAP**

Complete capture of hazardous vapours, gases or suspended solids at the place where they emerge or where they are created before they can have effects that are damaging to health or to the environment (see hazardous materials regulations, workplace regulations and laboratory guidelines)..

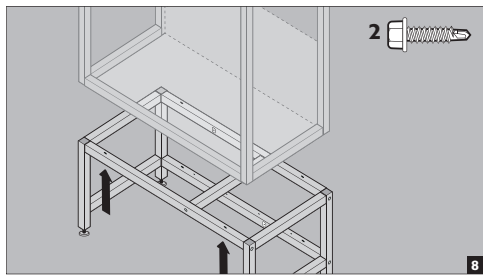
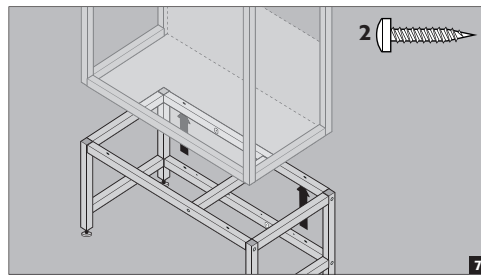
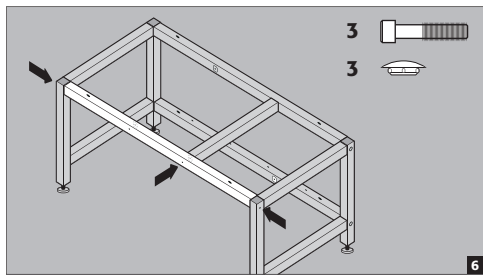
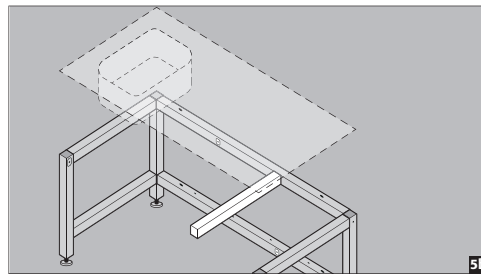
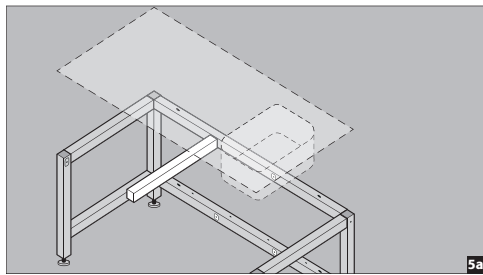
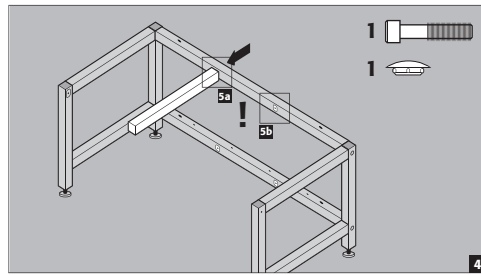
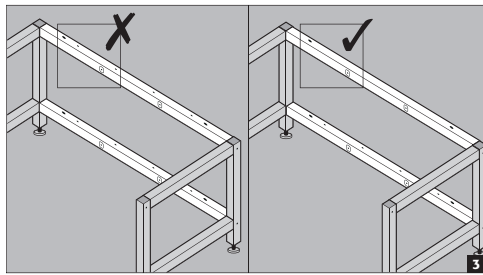
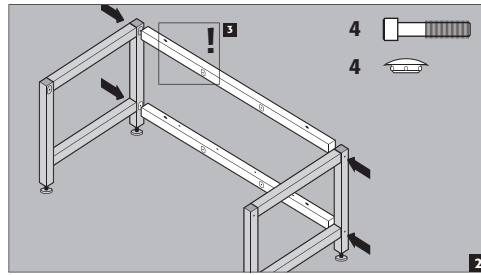
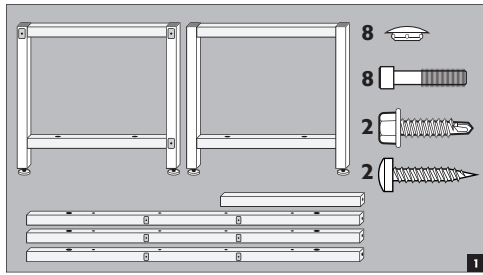
## 2. ERECTION - COMMISSIONING

### 2.1. ASSEMBLY OF THE SUPPORT FRAME (WIDTH UP TO 1800 MM)

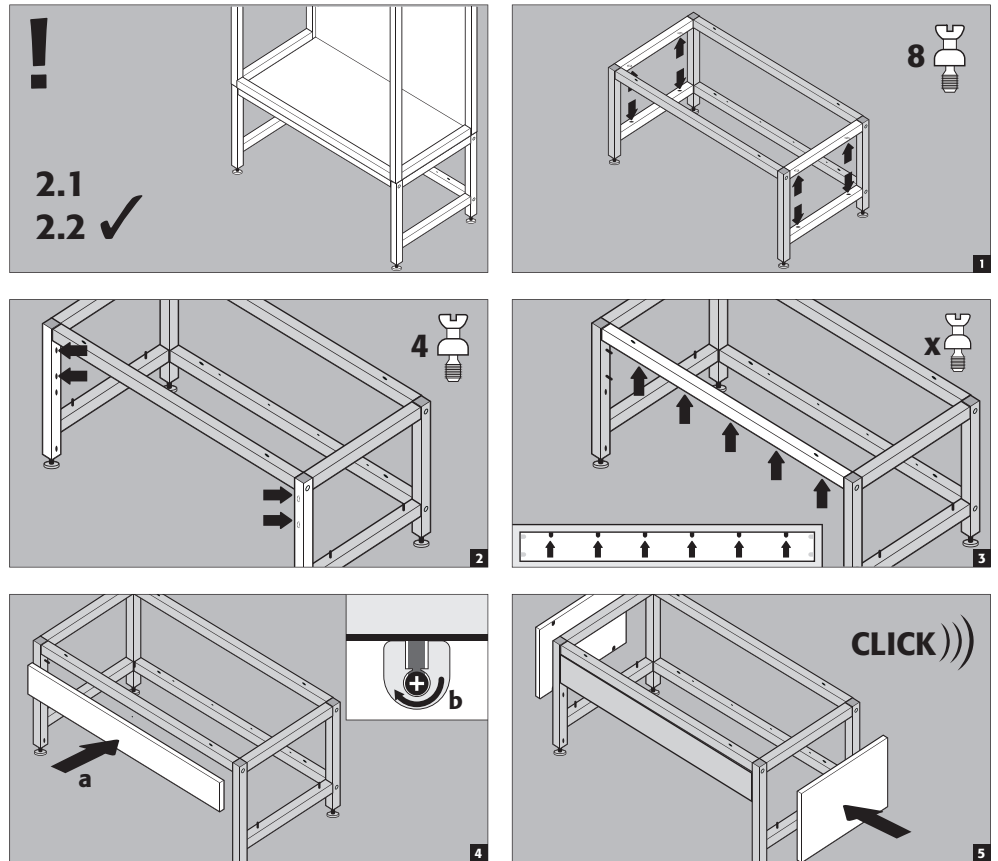




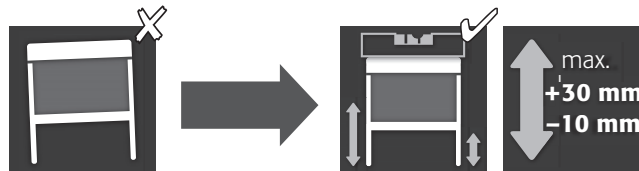
## 2.2. ASSEMBLY OF THE SUPPORT FRAME (WIDTH 1800 MM)



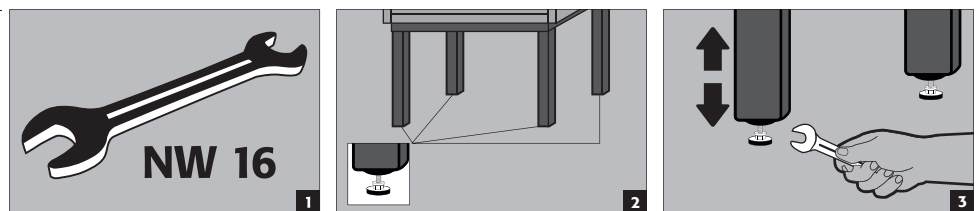
### 2.3. ASSEMBLY OF FRONT AND SIDE PANEL



### 2.4. ALIGNMENT OF THE WORKPLACE



with support frame  
(optional)

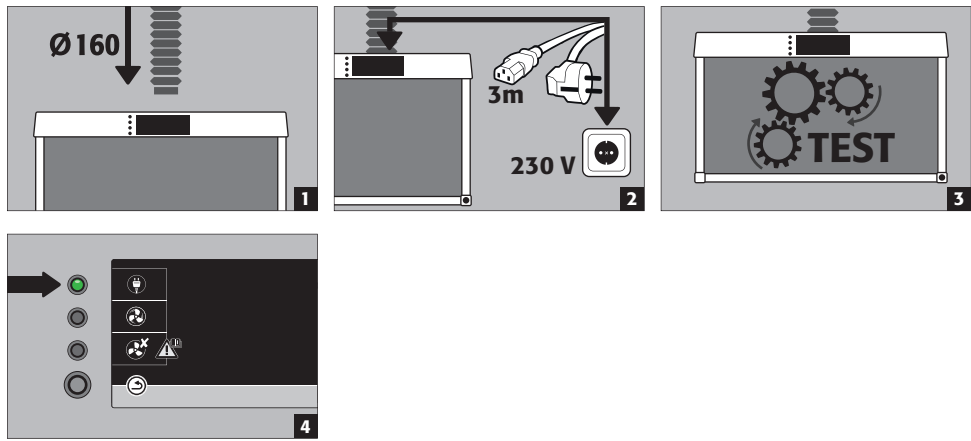


### 2.5. COMMISSIONING

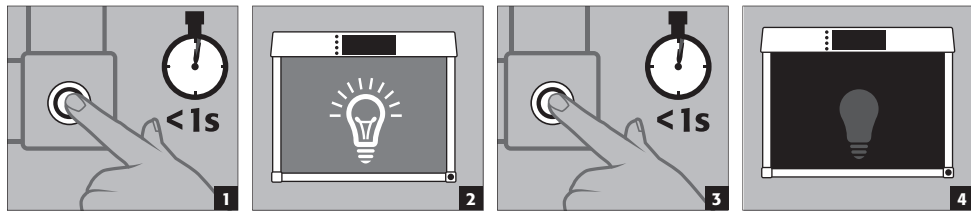


#### Testing before setup:

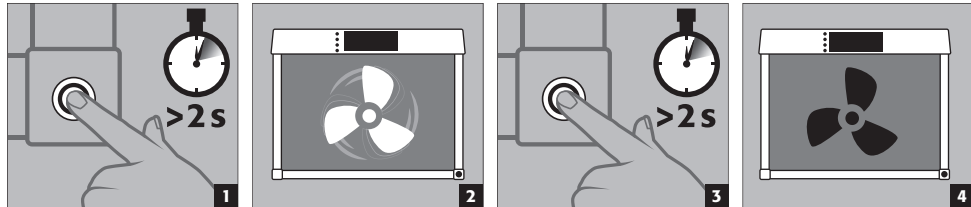
- Adequate ground loading capacity.
- Point loads on the 4 supports of the frame (technical data)!
- Make on site extraction air connection



Light on/off



Ventilation turned on/off



### 3. FUNCTION

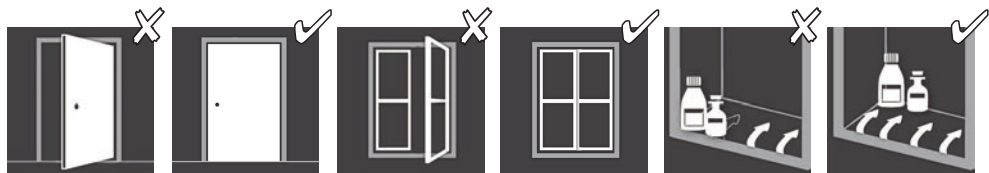
#### 3.1. MODE OF OPERATION

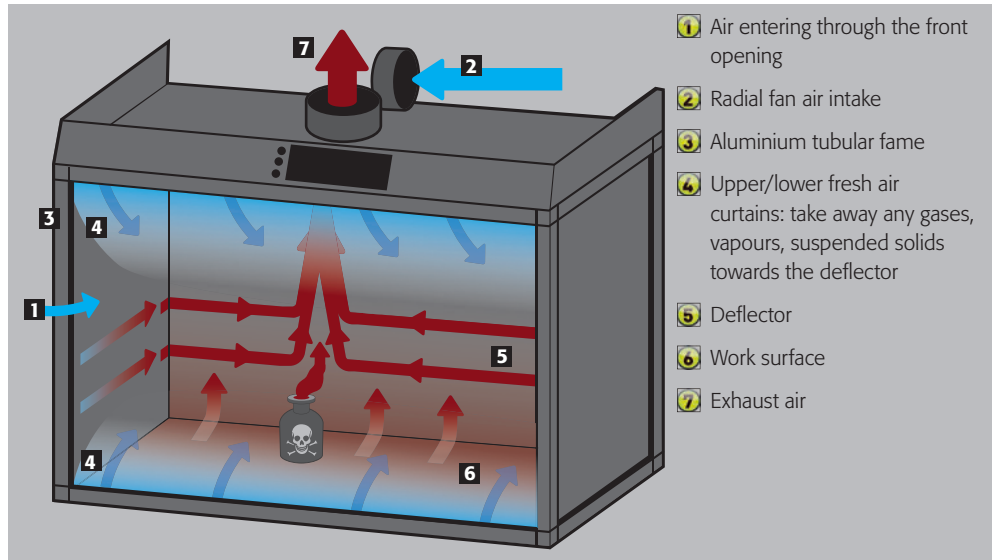


**CAUTION**

Avoid negative influences on the flow behaviour in the hazardous material workplace due to:

- › Incorrect operation (i.e. no fast movements > 1m/s)
- › more aspects:

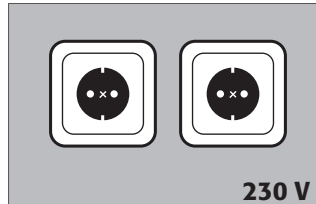




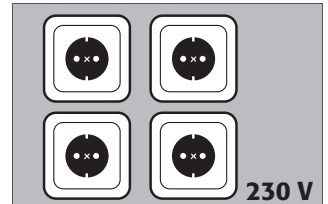
### 3.2. OPTIONAL MEDIA DUCT/MEDIA SOCKET

#### Earthed sockets

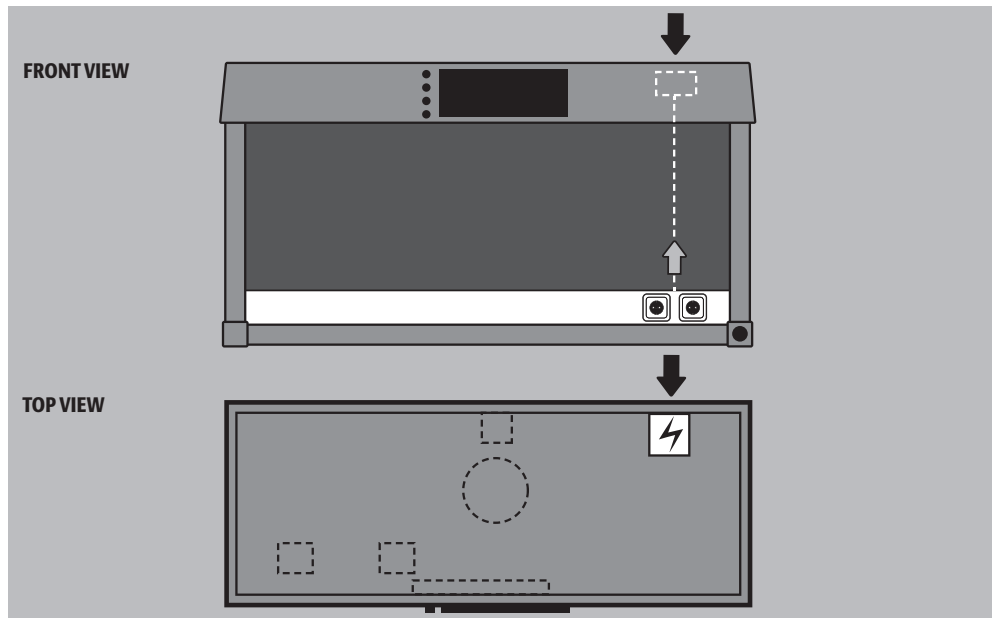
Width 90–150 cm



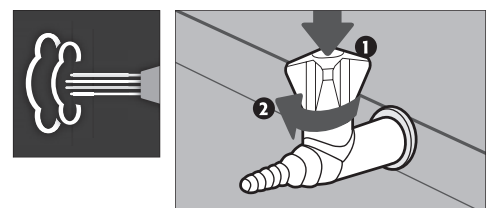
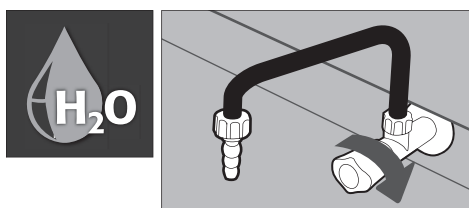
Width 180–240 cm



#### Position terminal box



#### Media supply





## 4.1. VENTILATION

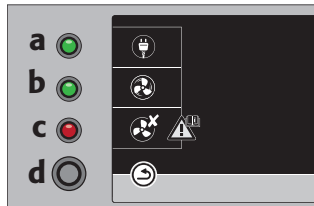


**PLEASE NOTE!**  
 factory setting of the inlet air flow, recommended exhaust air flows and pressure losses: see technical data!  
 The specified values don't apply if another setting is selected!

- Efficient, secure retention of the pollutants at the hazardous material workplace is achieved through an optimum combination of inlet and exhaust air.
- The retention capacity of the hazardous material workplace depends on the inlet air speeds of the device.
- An increase in inlet air flow is only possible with an increase in exhaust air flow, otherwise any pollutants may be forced out of the hazardous material workplace.
- The determination of optimised inlet and exhaust air flow ratios is significantly influenced by air movements present at the place of erection.
- For optimisation of ventilation settings please contact your local dealer or asecos.

## 4.2. MONITORING

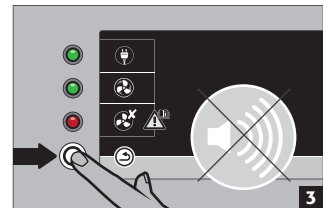
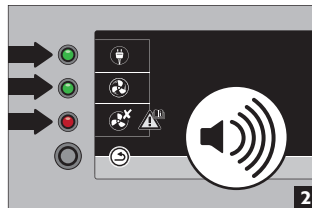
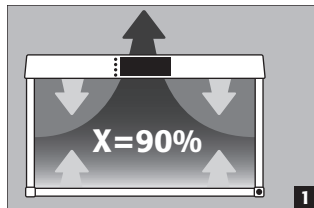
### Monitoring electronics



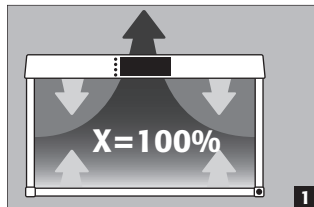
**a** Power supply OK – illuminates permanently  
**b** Ventilation OK – illuminates when ventilation is turned on  
**c** Ventilation ERROR – illuminates in case of malfunction  
**d** RESET push button

- Pressure measurement in exhaust and inlet air duct with integrated pressure cell and adjustable set point (minimum nominal air flows X)

### Deviation from nominal values X

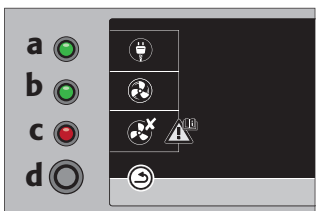


### Nominal values X are reached



**POWER FAILURE:**  
 Operation of the monitoring electronics unit with built-in even battery even in the case of a power failure.

## 5. MALFUNCTIONS - ACTIONS

	MALFUNCTION	ACTION
a	the mains plug is inserted a does not illuminate	Check if there is power on the socket in use
b	the On/Off switch had been activated b does not illuminate	LED defective (replace) or defect in the electronics
c	The light switch had been activated, The integrated lighting doesn't go on	Replace the light bulb.
d	c illuminates during operation of the workplace	Please check the pressure loss on customer's exhaust air duct (see these instructions hazardous material workplace! under ventilation adjustment/ monitoring of the hazardous material workplace) or defect of the integrated air inlet fan or heavy soiling of the discharge rails.
	3 short beeps sound every 60 seconds c shortly illuminates every 20 seconds	Power failure

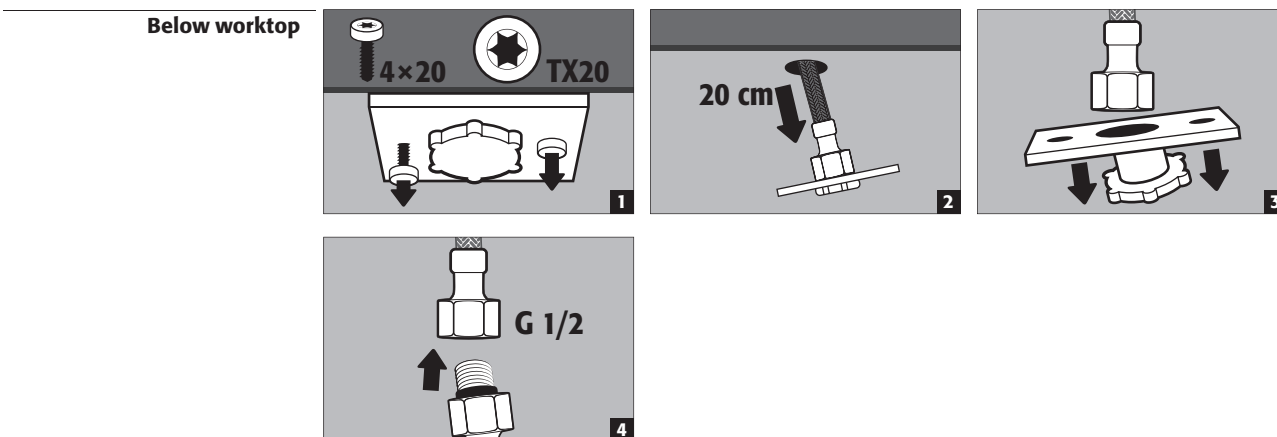


### CAUTION

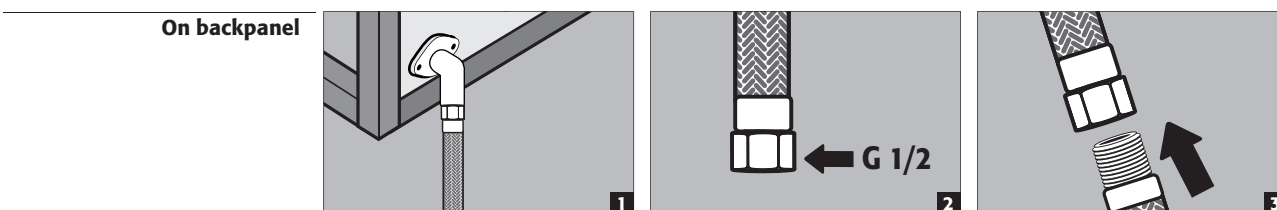
If your hazardous material workplace has the above or other defects, then please contact your dealer.

## 6. CONNECTION TO A MEDIA SUPPLY

### 6.1. CONNECTION IN THE MEDIA DUCT



### 6.2. CONNECTION IN THE MEDIA SOCKET



- **Continuous functional testing of the hazardous material workplace**
- during operation through the integrated ventilation monitoring unit (item 4)

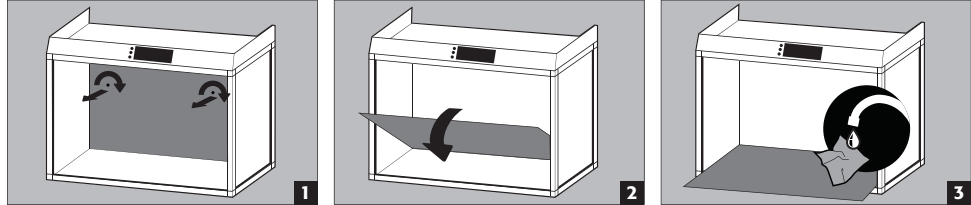
### Annual maintenance and functional test

- by specialised staff authorised by asecos

### Cleaning

- with normal mild household cleaners
- escaped fluids should be collected /removed immediately

### Cleaning of deflector






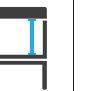





### CONTACT:

In the case of defects or complaints about our products (within and also after the warranty period), and for requesting safety checks or taking out a service contract, please contact our service hotline on:

Tel: +44 1785 22 70-90 [info@asecos.co.uk](mailto:info@asecos.co.uk)

## 8. TECHNICAL DATA

									
	1	2	3	4	5	6	7	8	9
<b>GAP.095.090.060</b>	1100	1785	1965	720	900	855	900	865	790
<b>GAP.095.120.060</b>	1100	1785	1965	720	900	855	1200	1165	1090
<b>GAP.095.150.060</b>	1100	1785	1965	720	900	855	1500	1465	1390
<b>GAP.095.180.060</b>	1100	1785	1965	720	900	855	1800	1765	1690
<b>GAP.095.210.060</b>	1100	1785	1965	720	900	855	2100	2065	1990
<b>GAP.125.090.060</b>	1400	2085	2265	720	900	1105	900	865	790
<b>GAP.125.120.060</b>	1400	2085	2265	720	900	1105	1200	1165	1090
<b>GAP.125.150.060</b>	1400	2085	2265	720	900	1105	1500	1465	1390
<b>GAP.125.180.060</b>	1400	2085	2265	720	900	1105	1800	1765	1690
<b>GAP.125.210.060</b>	1400	2085	2265	720	900	1105	2100	2065	1990
<b>GAP.095.090</b>	1100	1785	1965	720	900	855	900	865	790
<b>GAP.095.120</b>	1100	1785	1965	720	900	855	1200	1165	1090
<b>GAP.095.150</b>	1100	1785	1965	720	900	855	1500	1465	1390
<b>GAP.095.180</b>	1100	1785	1965	720	900	855	1800	1765	1690
<b>GAP.095.210</b>	1100	1785	1965	720	900	855	2100	2065	1990
<b>GAP.125.090</b>	1400	2085	2265	720	900	1105	900	865	790
<b>GAP.125.120</b>	1400	2085	2265	720	900	1105	1200	1165	1090
<b>GAP.125.150</b>	1400	2085	2265	720	900	1105	1500	1465	1390
<b>GAP.125.180</b>	1400	2085	2265	720	900	1105	1800	1765	1690
<b>GAP.125.210</b>	1400	2085	2265	720	900	1105	2100	2050	1990
<b>GAP.095.240</b>	1100	1785	1965	720	900	855	2400	2365	2290
<b>GAP.095.240.060</b>	1100	1785	1965	720	900	855	2400	2365	2290
<b>GAP.125.240.060</b>	1400	2085	2265	720	900	1050	2400	2365	2290
<b>GAP.125.240</b>	1400	2085	2265	720	900	1105	2400	2365	2290

	Höhe	Height	Hoogte	mm
<b>1</b>	ohne Gestell	without baseframe	zonder onderstel	
<b>2</b>	mit Untergestell für stehende Tätigkeit	with baseframe for standing work	met onderstel voor staand werk	
<b>3</b>	mit Untergestell für sitzende Tätigkeit	with baseframe for sitting work	met onderstel voor zittend werk	
<b>4</b>	Arbeitshöhe für sitzende Tätigkeit	work surface with baseframe (sitting work)	Werkhoogte met onderstel voor zittend werk	
<b>5</b>	Arbeitshöhe für stehende Tätigkeit	work surface with baseframe (standing work)	Werkhoogte met onderstel voor staand werk	
<b>6</b>	lichte Höhe (innen)	clearance height	Vrije hoogte	
	Breite	Width	Breedte	mm
<b>7</b>	Gesamtbreite	total width	Breedte totaal	
<b>8</b>	Innenbreite	width (internal)	Breedte (binnenkant)	
	nutzbare Arbeitsfläche	available work surface	Bruikbaar werkvlak	mm
<b>9</b>	Breite	width	Breedte	
<b>10</b>	Tiefe ohne Medienkanal	depth without utility duct	Diepte zonder mediakanaal	
<b>11</b>	Tiefe mit Medienkanal	depth with utility duct	Diepte met mediakanaal	
	Tiefe	Depth	Diepte	mm
<b>12</b>	Außentiefe	total depth	Diepte (buiten)	
<b>13</b>	Innentiefe	depth (internal)	Diepte (binnenkant)	
	Parameter	Parameters	Parameters	
<b>14</b>	maximale Belastung	Max. load work surface	maximale belasting	<b>N/m<sup>2</sup></b>
<b>15</b>	Gewicht ohne Gestell	weight without baseframe	Gewicht zonder onderstel	<b>kg</b>
<b>16</b>	Schalleistungspegel	noise level aprox.	Geluidsvermogensniveau	<b>dB(A)</b>
<b>17</b>	Druckverlust ca.	pressure loss aprox.	Drukverlies	<b>Pa</b>
<b>18</b>	Anzahl Abluftanschluss	ventilation connection (pieces)	Aansluiting ventilatie (aantal)	
<b>19</b>	Abluftanschluss	ventilation connection	Aansluiting ventilatie	<b>NW/mm</b>
<b>20</b>	empfohlene Abluftmenge	recommended amount of extraction air	Aanbev. hoeveelheid afvoerlucht	<b>m<sup>3</sup>/h</b>

	10	11	12	13	14	15	16	17	18	19	20
490	380	600	500	3000	86	32.0	52	1	370		
490	380	600	500	3000	95	32.0	99	1	510		
490	380	600	500	3000	118	32.0	163	1	650		
490	380	600	500	3000	127	36.0	61	2	790		
490	380	600	500	3000	164		85	2	940		
490	380	600	500	3000	96	32.0	96	1	500		
490	380	600	500	3000	106	32.0	185	1	690		
490	380	600	500	3000	131	32.0	305	1	890		
490	380	600	500	3000	141	35.0	114	2	1080		
490	380	600	500	3000	170		161	2	1280		
640	530	750	650	3000	93	32.0	52	1	370		
640	530	750	650	3000	103	32.0	99	1	510		
640	530	750	650	3000	126	35.0	163	1	650		
640	530	750	650	3000	136	36.0	61	2	790		
640	530	750	650	3000	174		85	2	940		
640	530	750	650	3000	103	32.0	96	1	500		
640	530	750	650	3000	114	32.0	185	1	690		
640	530	750	650	3000	139	32.0	305	1	890		
640	530	750	650	3000	150	35.0	114	2	1080		
640	530	750	650	3000	180		161	2	1280		
640	530	750	650	3000	176		114	2	1080		
490	380	600	500	3000	164		114	2	1080		
490	380	600	500	3000	179		216	2	1490		
640	530	750	650	3000	191		216	2	1490		

	<b>Hauteur</b>	<b>Altura</b>	<b>Altezza</b>	<b>mm</b>
<b>1</b>	sans châssis pour activités	sin bastidor	senza basamento	
<b>2</b>	avec châssis pour activités en position debout	con bastidor para actividad de pie	con basamento per attività in piedi	
<b>3</b>	avec châssis pour activités en position assise	con bastidor para actividad de sentado	con basamento per attività in seduti	
<b>4</b>	de travail châssis pour activités en position assise	Altura de trabajo con bastidor para actividad de sentado	Altezza di lavoro con basamento per attività in seduti	
<b>5</b>	de travail châssis pour activités en position debout	Altura de trabajo con bastidor para actividad de pie	Altezza di lavoro con basamento per attività in piedi	
<b>6</b>	hauteur libre	Altura libre	Altezza libera	
	<b>Largueur</b>	<b>Anchura</b>	<b>Larghezza</b>	<b>mm</b>
<b>7</b>	Largueur (ext.)	Anchura (ext.)	Larghezza (est.)	
<b>8</b>	Largueur (int.)	Anchura (int.)	Larghezza (int.)	
	<b>Surface de travail utile</b>	<b>Superficie de trabajo útil</b>	<b>Superficie di lavoro utilizzabile</b>	<b>mm</b>
<b>9</b>	Largueur	Anchura	Larghezza	
<b>10</b>	Profondeur sans conduit	Profundidad sin canal de medios	Profondità senza canale mezzi di esercizio	
<b>11</b>	Profondeur avec conduit	Profundidad con canal de medios	Profondità con canale mezzi di esercizio	
	<b>Profondeur</b>	<b>Profundidad</b>	<b>Profondità</b>	<b>mm</b>
<b>12</b>	Profondeur (ext.)	Profundidad (ext.)	Profondità (est.)	
<b>13</b>	Profondeur (int.)	Profundidad (int.)	Profondità (int.)	
	<b>Paramètres</b>	<b>Parámetros</b>	<b>Parametri</b>	
<b>14</b>	Charge maximum	Carga máxima	Carico max.	<b>N/m²</b>
<b>15</b>	Poids sans châssis	Peso con bastidor	Peso con basamento	<b>kg</b>
<b>16</b>	Niveau de puissance acoustique env.	Nivel de potencia acústica aprox.	Livello di potenza sonora appross.	<b>dB(A)</b>
<b>17</b>	Perte de pression env.	Pérdida de presión (aprox.)	Perdita di pressione appross.	<b>Pa</b>
<b>18</b>	Raccord de ventilation (nombre)	Conexión de salida de aire (numero)	Allacciamento aria di scarico (quantità)	
<b>19</b>	Raccord de ventilation	Conexión de salida de aire	Allacciamento aria di scarico	<b>NW/mm</b>
<b>20</b>	Débit d'évacuation recommandé	Cantidad de aire de salida recomendada	Quantità aria di scarico cons.	<b>m³/h</b>





#### **asecos GmbH**

Sicherheit und Umweltschutz  
Weiherfeldsiedlung 16-18  
DE-63584 Gründau

☎ +49 6051 92200  
☎ +49 6051 922010  
✉ info@asecos.com

#### **asecos Ltd.**

Safety and Environmental Protection  
Profile House  
Stores Road  
Derby, Derbyshire  
DE21 4BD

☎ +44 1332 415933  
✉ info@asecos.co.uk

#### **Asecos BV**

Veiligheid en milieubescherming  
Tuinderij 15  
NL-2451 GG Leimuiden

☎ +31 172 506476  
☎ +31 172 506541  
✉ info@asecos.nl

#### **asecos**

Safety and Environmental Protection Inc.  
19109 West Catawba Avenue, Suite 200  
Cornelius, NC 28031  
USA

☎ +1 704 8973820  
☎ +49 6051 922010  
✉ info@asecos.com

#### **asecos SARL**

Sécurité et protection de l'environnement  
1, rue Pierre Simon de Laplace  
FR-57070 Metz

☎ +33 3 87 78 62 80  
✉ info@asecos.fr

#### **asecos Schweiz AG**

Sicherheit und Umweltschutz  
Gewerbe Brunnmatt 5  
CH-6264 Pfaffnau

☎ +41 62 754 04 57  
☎ +41 62 754 04 58  
✉ info@asecos.ch

#### **asecos S.L.**

Seguridad y Protección del  
Medio Ambiente  
CIM Vallès, C/ Calderí S/N  
Oficinas 75 a 77  
ES-08130 - Santa Perpètua de Mogoda  
Barcelona

☎ +34 935 745911  
☎ +34 935 745912  
✉ info@asecos.es