

EN

EP.V.34172.02 | 05/2026



**USER MANUAL**

Safety storage cabinets according to EN 14470-1



## Q-CLASSIC-15



Q15.195.116



Q15.195.056  
Q15.195.056.R

## Q-CLASSIC-30



Q30.195.116  
Q30.195.116.FU.WDAS



Q30.195.086.WD  
Q30.195.086.WDR  
Q30.195.086.FU.WDAS  
Q30.195.086.FU.WDASR



Q30.195.056  
Q30.195.056.R  
Q30.195.056.FU.WDAS  
Q30.195.056.FU.WDASR

## Q-DISPLAY-30



Q30.195.086.WDFW

## Q-CLASSIC-90



Q90.195.120  
Q90.195.120.FU.WDAS



Q90.195.090  
Q90.195.090.FU.WDAS



Q90.195.060  
Q90.195.060.R  
Q90.195.060.FU.WDAS  
Q90.195.060.FU.WDASR



Q90.195.120.MV  
Q90.195.120.MM



Q90.135.120



Q90.195.120.ME.WDC

## Q-PEGASUS-90



Q90.195.120.WDAC



Q90.195.090.WDAC



Q90.195.060.WDAC  
Q90.195.060.WDACR

## Q-PHOENIX-90



Q90.195.120.FD



Q90.195.060.FD



**asecos GmbH**  
Customer service  
Weierfeldsiedlung 16–18  
D-63584 Gründau

Fax: +49 60 51 - 92 20-10  
email: service asecos.com

## **YOUR PERSONAL DOCUMENTATION TO THE asecos SAFETY CABINET**

Dear Customer,

you have made a decisive investment in safety for your company by purchasing this asecos safety storage cabinet. You now own an innovative product made of top-quality materials guaranteeing the highest quality standards.

asecos safety storage cabinets have complete authorisation documents. We archive the authorisation documents for every individual cabinet, keeping them ready for you should you ever need them (e.g. for a works inspection or similar). Simply request them using this form.

Tear of or copy that page and return to us by fax with your address and serial number of the cabinet on it.

Yours sincerely  
asecos GmbH

### **Contact**

<b>Company</b>		
<input type="text"/>		
<b>Street</b>	<b>Postal code</b>	<b>Town</b>
<input type="text"/>	<input type="text"/>	<input type="text"/>
<b>Name of contact person</b>		
<input type="text"/>		
<b>email</b>	<b>Phone No.</b>	
<input type="text"/>	<input type="text"/>	
<b>Serial numbers of safety storage cabinets</b>		
<input type="text"/>	<input type="text"/>	<input type="text"/>
<input type="text"/>	<input type="text"/>	<input type="text"/>
<input type="text"/>	<input type="text"/>	<input type="text"/>
<input type="text"/>	<input type="text"/>	<input type="text"/>

# OPERATING INSTRUCTIONS

Dear customer,

Thank you very much for purchasing a safety storage cabinet from our company, with which you have made a decisive investment in the safety within your company. Our safety storage cabinets make the storage of hazardous materials at the workplace safe and convenient for you.

Please read these operating instructions very carefully. Get to know the advantages and simple operability of our safety storage cabinets in detail. This simplifies the daily handling of hazardous materials for you.

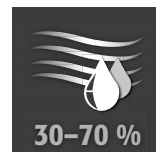
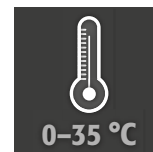
Many thanks  
Your asecos team

<b>1. NOTES • GUIDELINES • GUARANTEE</b> .....	<b>5</b>
1.1. General safety notes .....	5
1.2. Guarantee .....	5
1.3. Cabinet Details .....	5
1.4. Marking and symbols on the cabinet .....	6
<b>2. TRANSPORT</b> .....	<b>6</b>
2.1. General facts .....	6
2.2. Tilting the cabinet .....	6
2.3. Dismantling of the transport packaging .....	7
2.4. In-plant transport .....	7
2.5. Titling onto the side wall .....	7
2.6. Q-Mover .....	7
<b>3. ERECTION • COMMISSIONING • FUNCTION</b> .....	<b>8</b>
3.1. Alignment Of The Cabinets .....	8
3.2. Commissioning .....	9
3.3. Anti-Tilt Device .....	9
<b>4. OPENING AND CLOSING MECHANISMS</b> .....	<b>10</b>
4.1. Opening the cabinet .....	10
4.2. Closing the cabinet .....	10
4.3. Locking .....	10
4.4. Automatic door closing system .....	10
<b>5. INTERIOR FITTINGS</b> .....	<b>11</b>
5.1. Bottom collecting sump .....	11
5.2. Shelves (height-adjustable) .....	12
5.3. Tray shelves (height-adjustable) .....	12
5.4. Metal free tray shelves .....	12
5.5. Grid shelves (height adjustable) .....	13
5.6. Drawers .....	13
5.7. Storage box .....	14
5.8. Leaks .....	15
<b>6. STORAGE</b> .....	<b>15</b>
6.1. Fire-protected lead-through .....	15
<b>7. EARTHING</b> .....	<b>15</b>
7.1. Ground connection .....	16
7.2. Grounding PREMIUM .....	16
7.3. Grounding the interior .....	16
<b>8. VENTILATION</b> .....	<b>17</b>
<b>9. FIRE • DISPOSAL</b> .....	<b>17</b>
9.1. Opening the cabinet after the fire .....	17
9.2. Disposal .....	17
<b>10. SAFETY CHECKS</b> .....	<b>17</b>
10.1. In general .....	17
10.2. Wearing parts .....	18
<b>11. TECHNICAL DRAWING</b> .....	<b>18</b>
<b>12. TECHNICAL DATA</b> .....	<b>19</b>
12.1. Table with technical data .....	19
12.2. Table of Load Capacities and Storage Capacities for Storage Levels .....	20

## 1.1. GENERAL SAFETY NOTES

- Observe applicable statutes and regulations, and the notes in these operating instructions, when handling hazardous materials
- Work on the electrical system is to be carried out only with the power turned off and only by qualified electricians – refer here to the regulations of the local electricity supply company.
- The on-site installation conditions are to be observed (e.g. bolting the cabinets to the building).
- The instructions of the supervisory engineering department must be followed.
- Observe accident prevention regulations and workplace ordinance
- **Ensure that the necessary safety checks are only carried out by authorised staff using original spare parts**
- Only use the cabinet after having been properly instructed; access is to be forbidden to unauthorised persons.
- The pivoting area of the doors is to be kept free at all times; doors/drawers are to be kept closed
- By assigning trained/authorised technical personnel you can prevent the malfunctions, damage and corrosion damage that result from inappropriate transport.
- Observe the upper limits for stored quantities, loading etc.
- Containers with a volume larger than that of the bottom collecting sump may not be placed inside the cabinet; spilt hazardous materials are to be collected immediately and removed
- Vessels containing aggressive chemicals (acids and alkalis) are to be kept in special cabinets for acids and alkalis or on shelves for acids and alkalis
- To avoid explosive atmospheres and harmful vapours, sufficient technical ventilation is strongly recommended. Please observe the instructions for connection to an exhaust air system.
- Before storing such materials, check that the cabinet's surface is resistant to the chemicals.
- Before the initial commissioning, the safety storage cabinet is to be examined by the user for possible damage.

### Set-up requirements



## 1.2. GUARANTEE

The guarantee for this product is agreed between you (the customer) and your dealer (the seller). As the manufacturer, asecos guarantees the products listed in the operating instructions for a period of 24 months from the date of delivery. All model safety equipment are subject to a compulsory annual inspection by specialised staff authorised by the manufacturer. Otherwise the customer's guarantee claim against the manufacturer expires. Please note that the warranty is also void if holes are drilled or modifications are made without consulting the manufacturer asecos.

## 1.3. CABINET DETAILS

A complete overview of the models can be found at the start of the operating instructions.

**Cabinet data: logbook (included with the cabinet)**  
**Technical drawing: see appendix**  
**Technical data: table in appendix**

### Q-LINE

All cabinets are used for the safe, passive storage of flammable liquids in work rooms in accordance with applicable national regulations.

**Modell Q90.195.120.ME.WDC** suitable for the safe, passive storage of flammable metal powders

These models are tested, certified and labeled in accordance with the requirements of EN 14470-1.

- Models Q15 = fire resistance of 15 minutes
- Models Q30 = fire resistance of 30 minutes
- Models Q90 = fire resistance of 90 minutes

### Models Q30.195.xxx.FU.WDAS and Q90.195.xxx.FU.WDAS

Additionally tested, certified and marked according to the requirements of FM 6050 and UL(C) 1275.

### Model versions .MV and .MM:

Cabinet interior with vertical or vertical and horizontal partition. Enables the separate storage of hazardous substances in a safety cabinet in two or four compartments. **Please note:** the separate storage of different hazardous substances in the safety cabinet takes place without taking into account other fire protection requirements.

## 1.4. MARKING AND SYMBOLS ON THE CABINET

Various stickers with different symbols are attached to the cabinet. An explanation of the individual symbols and illustrations is provided below.



**1** Prohibition sign: No open flame



**2** Mandatory sign: Refer to instruction manual/booklet



**3** Mandatory sign: Keep doors closed



**4** Recommendation: Connection to a technical ventilation system is recommended.



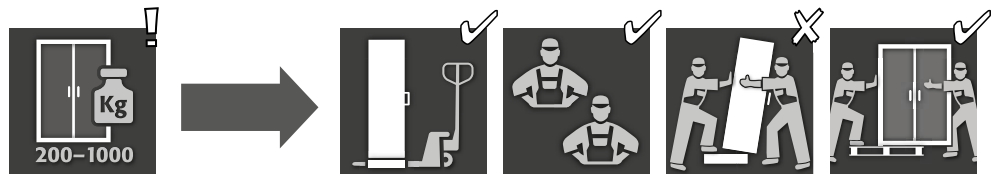
**5** Load is prohibited: No additional cabinet may be placed on the cabinet ceiling.



**6** Load permitted: An additional cabinet may be placed on the cabinet ceiling.

## 2. TRANSPORT

### 2.1. GENERAL FACTS



- In principle, when delivered, the Q-LINE cabinets can be transported upright, tied up and secured against slipping to the final installation location using the integrated transport base with a pallet truck. For reasons of transport technology, the following cabinets in connection with different transport packaging are delivered on an additional transport pallet.

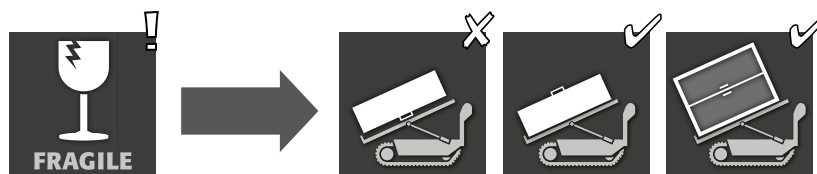
Model	Q90			Q15 / Q30		
<b>Cabinet width</b>	<b>1193</b>	<b>893</b>	<b>599</b>	<b>1164</b>	<b>864</b>	<b>564</b>
Packaging BASIC	–	–	✓	–	–	✓
Packaging MEDIUM	–	–	✓	✓	✓	✓
Packaging HEAVY DUTY	–	–	✓	✓	✓	✓



**CAUTION:**

Transport the cabinet in an upright position on a pallet truck, tied and secured against slipping, until the final place of installation is reached. The transport locks in the door joints may only be removed directly at the place of installation! Inappropriate transport can lead to concealed damage to the fire protection insulation! We can only guarantee the necessary quality if the cabinet is transported to the place of its use by our specially trained staff.

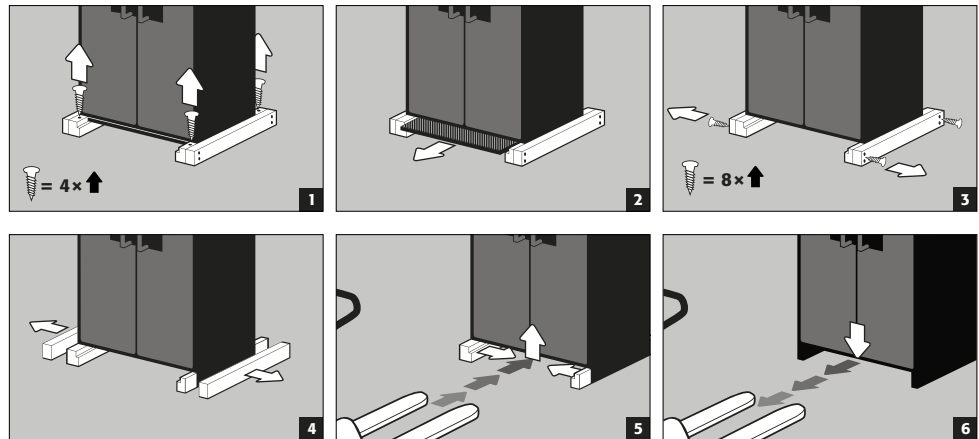
### 2.2. TILTING THE CABINET



**CAUTION:**

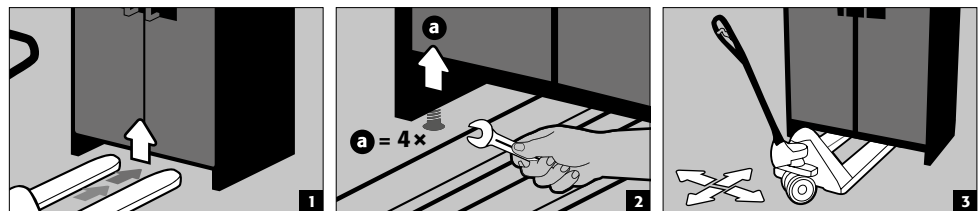
Tilting the cabinet may only be done without jolts! When using a stair robot, observe the maximum load capacity of the device according to the manufacturer's instructions!

### 2.3. DISMANTLING OF THE TRANSPORT PACKAGING



### 2.4. IN-PLANT TRANSPORT

- In-plant transport is also possible without transport locks (inserted as standard in the door joints)



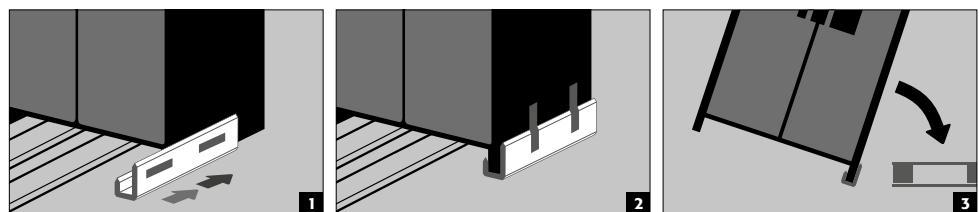
**ATTENTION**  
**Q-LINE type 90, width 600 mm**  
 The clearance drive-in width of the base is 520 mm.

**Q-LINE type 15/30, width 560 mm**  
 The clearance drive-in width of the base is 406 mm.

**You must observe this when selecting a pallet truck! Appliances with a carrying width larger than the drivein width may not be used.**

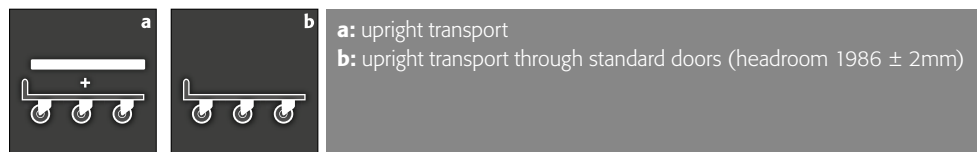
### 2.5. TITLING ONTO THE SIDE WALL

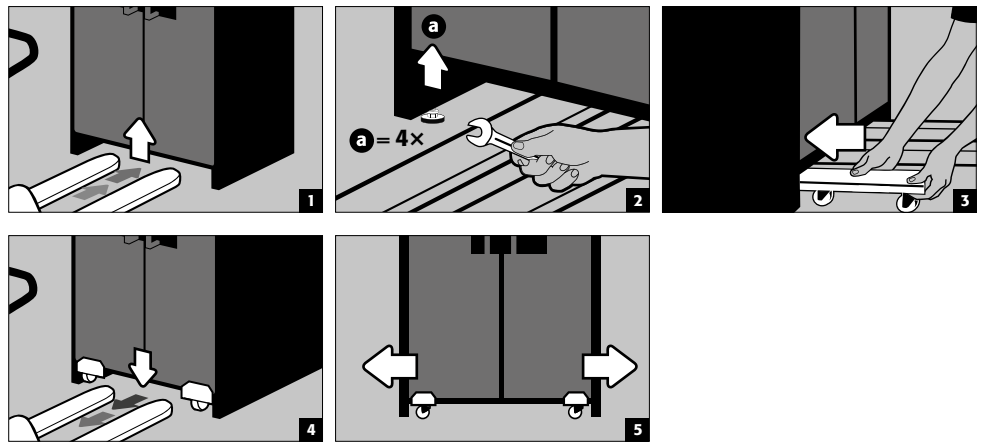
- Titling onto the side wall is only possible with the optionally available tilting bracket (order no. 29556).



### 2.6. Q-MOVER

- Order no. 30037, available from your authorised dealer



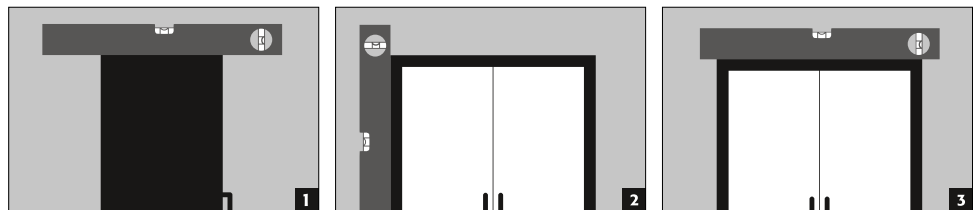
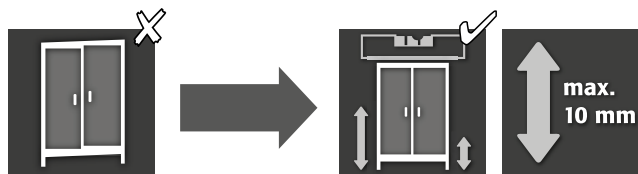


**CAUTION:**

Written notification of any damage to the cabinet must be given immediately!

**3. ERECTION - COMMISSIONING - FUNCTION**

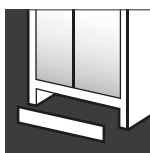
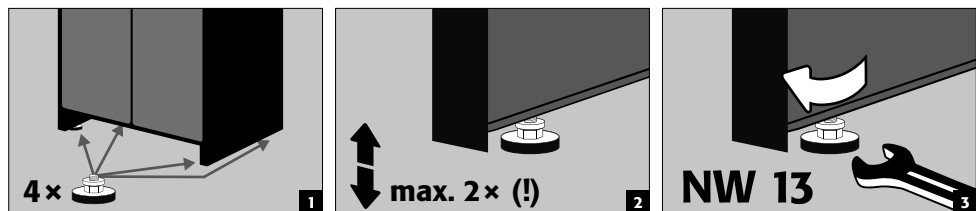
**3.1. ALIGNMENT OF THE CABINETS**



**CAUTION:**

Door elements must not scrape against the fire prevention seals in the fold of the door when opening and closing! Doors with an automatic closing mechanism must close automatically from every position and the lock must be able to lock!

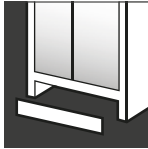
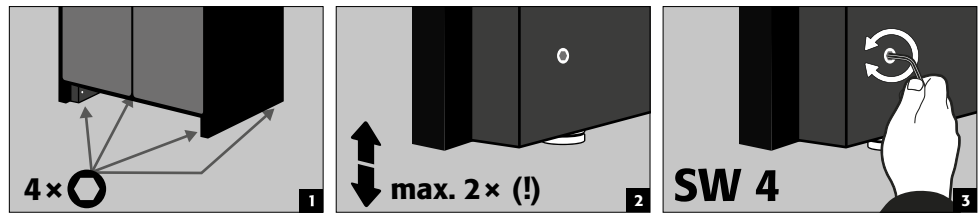
Q-CLASSIC-90  
Q-PEGASUS-90  
Q-PHOENIX-90



After alignment, the transport base can be closed with an optionally available base cover.

<b>Cabinet width</b>	<b>1193 mm</b>	<b>893 mm</b>	<b>599 mm</b>
Order No.	30036	30069	30112

**Q-CLASSIC-15/30**  
with adjusting aids in plinth



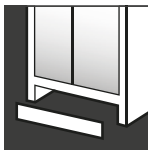
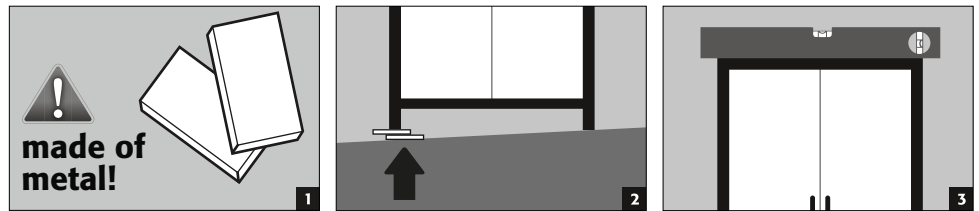
After alignment, the transport base can be closed with an optionally available base cover.

<b>Cabinet width</b>	<b>1164 mm</b>	<b>864 mm</b>	<b>564 mm</b>
Order No.	31005	31010	31004



**CAUTION**  
The adjustment aids are integrated in the base and can only be ordered in addition with the cabinet.  
**Retrofitting on site is not possible.**

**Q-CLASSIC-15/30**  
without adjusting aids



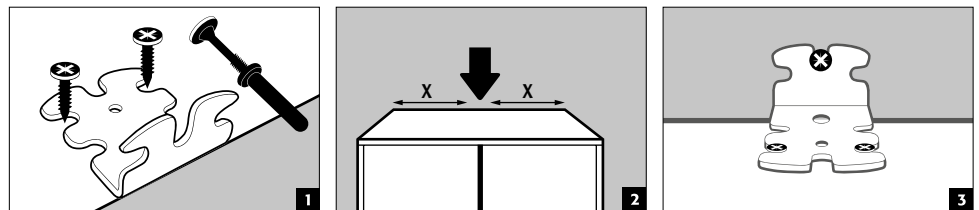
After alignment, the transport base can be closed with an optionally available base cover.

<b>Cabinet width</b>	<b>1164 mm</b>	<b>864 mm</b>	<b>564 mm</b>
Order No.	31925	31924	31923

**3.2. COMMISSIONING**

- Before putting into operation for the first time, the user must carry out an examination of the safety storage cabinet for possible damage, such as defective or loose sealing elements, correct alignment and perfect functioning of the door elements.  
Use the cabinet and accessories only if they are in an orderly condition.

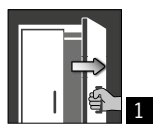

**3.3. ANTI-TILT DEVICE**








**CAUTION**  
If the cabinets are equipped with more than 6 drawers or more than one heavy-duty drawer, they must be securely attached to the building wall using the tilt protection provided. Depending on the nature of the wall, suitable fastening material, which may differ from the scope of delivery, must be selected

## 4. OPENING AND CLOSING MECHANISMS

### 4.1. OPENING THE CABINET

			
<b>Q-LINE</b>			
Q-CLASSIC-15	✓		<b>1</b> Manual opening of the individual doors <b>2</b> For two-door cabinets: Manual opening of both doors with only one hand. The cabinet is equipped with AGT.
Q-CLASSIC-30	✓		
with door version WDC	✓		
with door version WDAS	✓		
Q-DISPLAY-30	✓		
Q-CLASSIC-90	✓		
with door version WDC	✓		
with door version WDAS	✓		
Q-PEGASUS-90		✓	
Q-PHOENIX-90	✓		

### 4.2. CLOSING THE CABINET

						
<b>Q-LINE</b>						
Q-CLASSIC-15	✓				✓	<b>1</b> Doors closable only by hand <b>2</b> Doors permanently self-closing or self-closing after release of the doors from the arresting system <b>3</b> Automatic door closing system TSA <b>Other features</b> <b>4</b> Doors with open-arrest system <b>5</b> <b>Thermal release:</b> in the case of fire the doors close automatically
Q-CLASSIC-30	✓				✓	
with door version WDC		✓				
with door version WDAS	✓			✓	✓	
Q-DISPLAY-30	✓				✓	
Q-CLASSIC-90	✓				✓	
with door version WDC		✓				
with door version WDAS	✓			✓	✓	
Q-PEGASUS-90			✓	✓	✓	
Q-PHOENIX-90	✓			✓	✓	



**CAUTION:**

If the doors not longer latch in any position, then the fusible link of the thermal release has tripped. **The cabinet is to be returned to its delivery condition immediately in order to avoid malfunctions.**

### 4.3. LOCKING



**Q-LINE TYPE 90**  
CYLINDER LOCK (suitable for master key systems) with locking status indicator



**Q-LINE TYPE 30 AND 15**  
CYLINDER LOCK (suitable for master key systems)



**ATTENTION:**

The owner/user must ensure that all doors are kept closed whenever the contents of the cabinet are not being accessed. In general, it must be noted that the cabinets do not possess an emergency unlocking facility. This means that persons trapped inside the cabinet cannot free themselves!

### 4.4. AUTOMATIC DOOR CLOSING SYSTEM



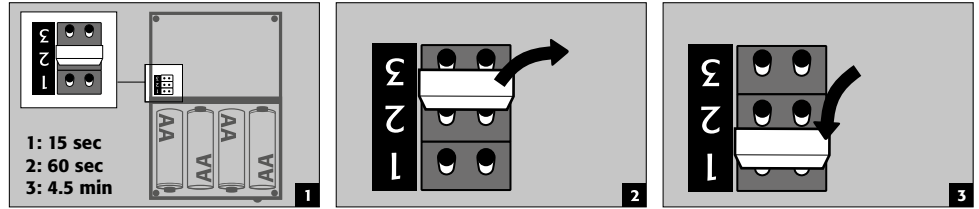
**CAUTION:**

The doors close automatically. The time interval until the doors close can be set individually by means of a jumper (preset: 60 seconds). Do not push the doors to close by hand, since this can lead to damage to the mechanism!

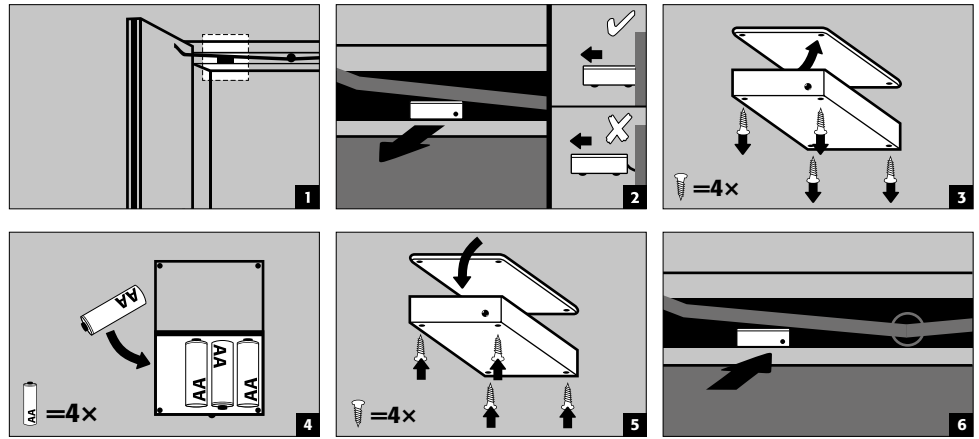
Sequence



Changing the closing times with the aid of the jumper



Battery replacement



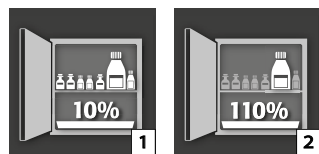
**CAUTION:**  
The electrical cable on the housing may not come into contact with the locking linkage of the cabinet!

**5. INTERIOR FITTINGS**



**CAUTION:**  
Loose parts (e.g. insertable sumps) must always be fully installed/inserted in order to ensure secure closing of the cabinet doors in case of fire.

**5.1. BOTTOM COLLECTING SUMP**





#### According to EN 14470-1:2023-09 (Section 5.7):

A bottom collecting sump/drawer must be installed below the lowest storage level. The bottom collecting sump/drawer must have a minimum containment capacity of 10% of all containers stored in the cabinet [1], or at least 110% of the capacity of the largest single container [2], whichever capacity is greater.

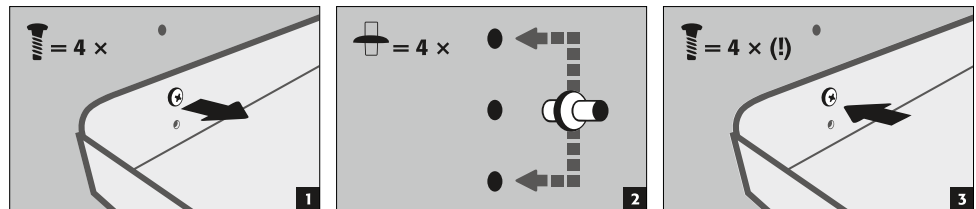
As a general rule, the floor tray/drawer must not be used as a storage surface. If the floor tray/drawer is used directly as a storage surface and is therefore also the lowest storage level, the user must ensure that the minimum containment volume for all stored containers or the capacity of the largest container is guaranteed.

The specifications on the safety storage cabinet's nameplate regarding capacity (litres), the maximum container size, and maximum storage volume represent the values provided that the bottom collecting sump/drawer is not used as a storage surface.

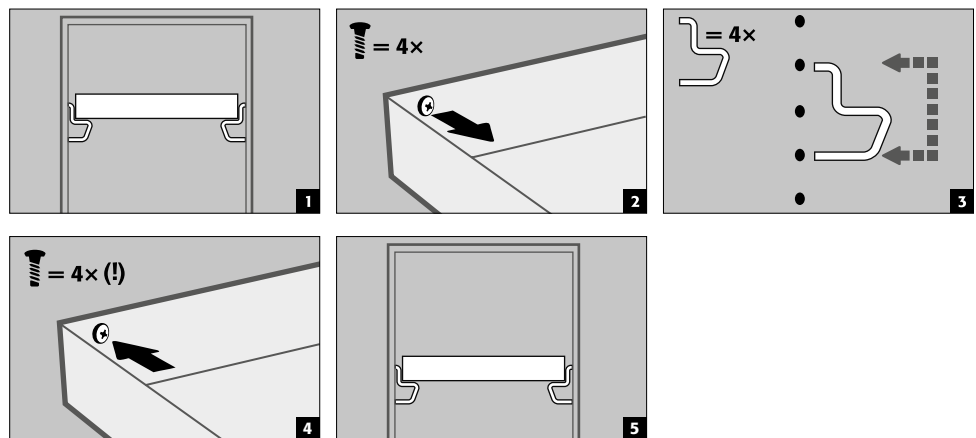
#### The sump pallets for the safety storage cabinets are tested and certified as follows

- Sump pallets made of sheet steel or stainless steel in accordance with StawaR – TÜV Süd (delivery to Germany, Austria, and Switzerland)
- Plastic (PP) sump pallets with general building authority approval from DIBt Berlin (available nationwide)

### 5.2. SHELVES (HEIGHT-ADJUSTABLE)



### 5.3. TRAY SHELVES (HEIGHT-ADJUSTABLE)



### 5.4. METAL FREE TRAY SHELVES

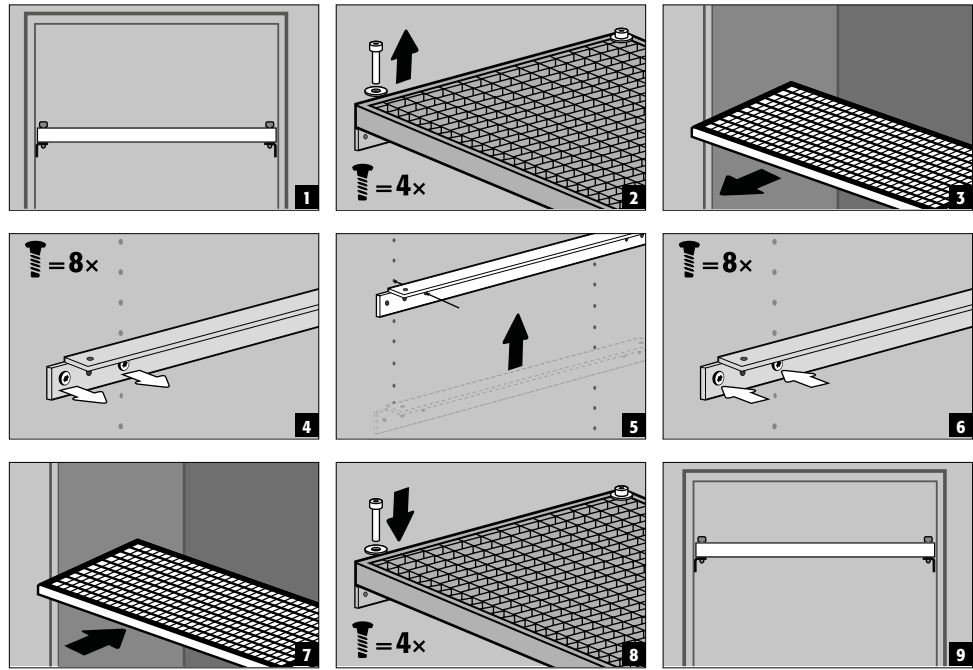
- Suitable for storing small quantities of flammable, slightly aggressive hazardous substances
- The tray shelf is installed in the cabinet in fixed positions by the manufacturer. The PP plastic sump is placed on the shelf and secured against pulling out.



#### CAUTION:

The height of metal-free tray shelves in safety storage cabinets may only be adjusted on site by authorized asecos employees, as further pre-assembly work is necessary for this!

### 5.5. GRID SHELVES (HEIGHT ADJUSTABLE)

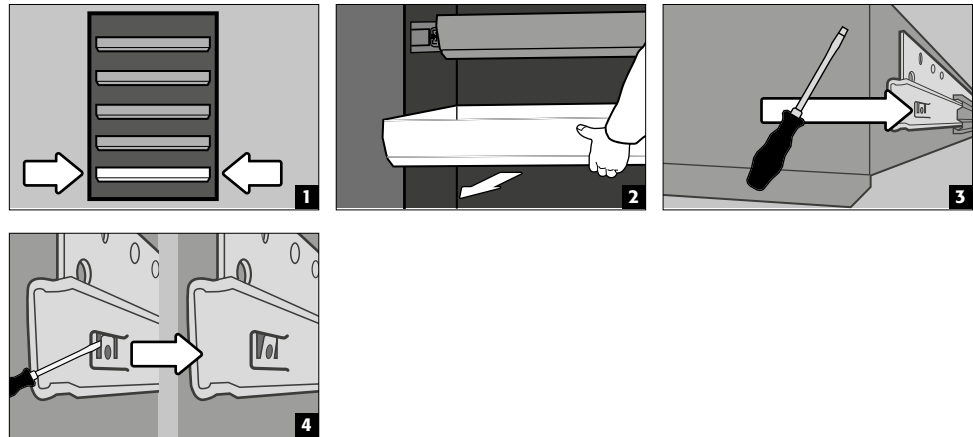


### 5.6. DRAWERS



**Q-LINE models with carcase width 120 or 90 cm (version without dividing wall)**  
 Before first use and loading, the bottom drawer must be additionally secured against unintentional removal.

Securing the lowest drawer against possible lifting out

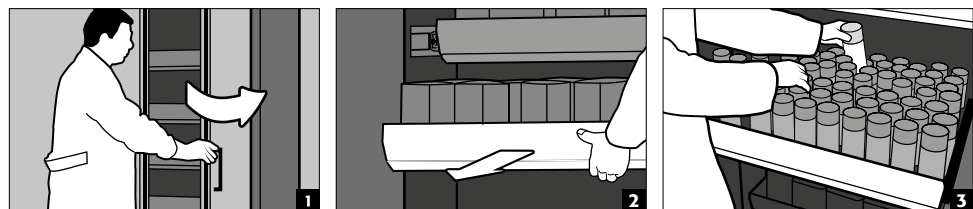


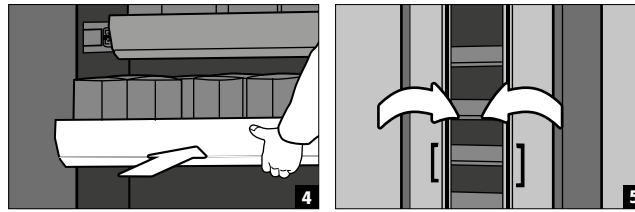
**CAUTION:**  
 Depending on the number, the drawers are installed at the factory in fixed positions in the cabinet. Subject to technical feasibility, special classifications are possible at an additional cost.

**2-door cabinet models**

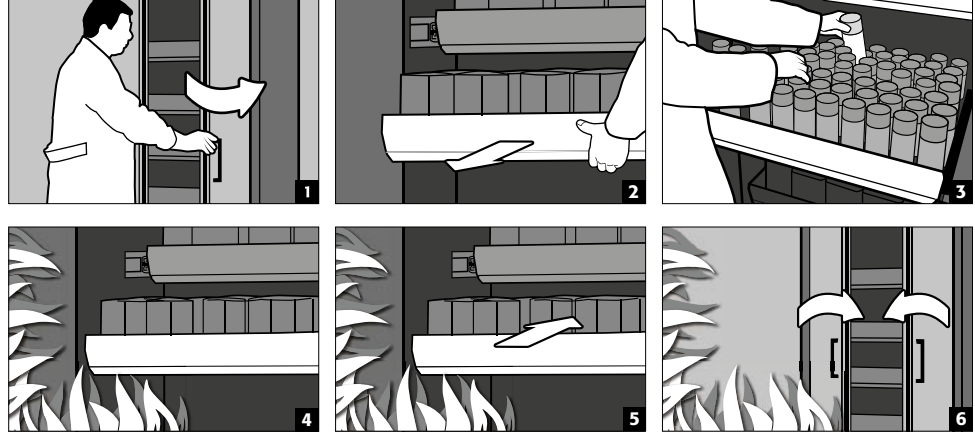
- **Standard operation:** Pull the drawer out of the cabinet by hand and push it in again
- **Event of fire:** thermal release, pulled out drawer is automatically drawn into the cabinet

Normal operation



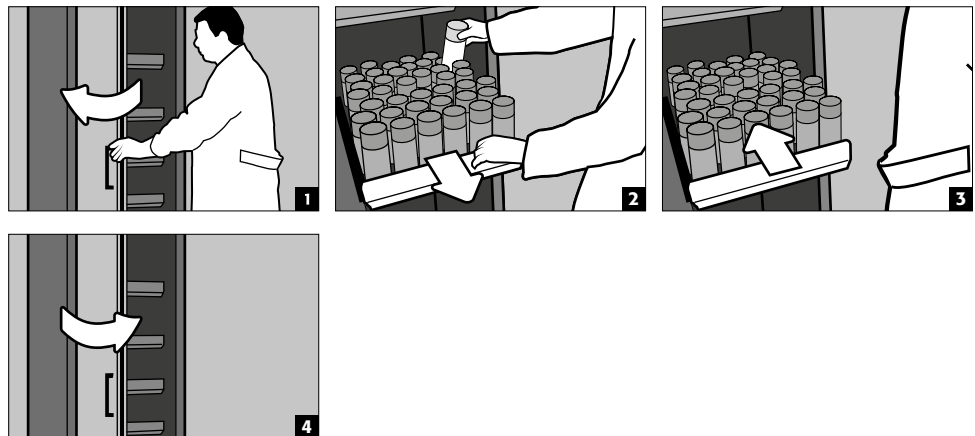


**Event of fire**



**1-door cabinet models**

- **Standard operation:** Pull the drawer out of the cabinet by hand. As soon as the drawer is released, it automatically retracts back into the cabinet with a time delay.



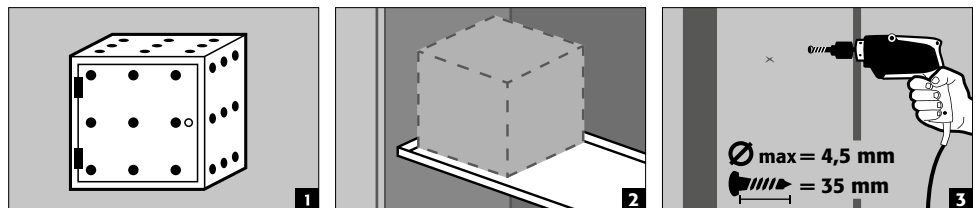
**CAUTION:**

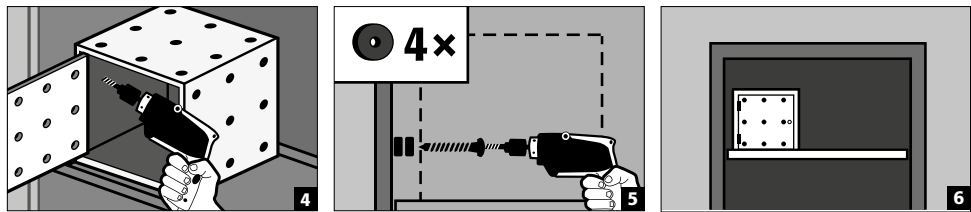
The height of the drawers in safety storage cabinets may be adjusted only by authorised asecos employees, since the safe retraction of the drawers in case of fire must be guaranteed!

**5.7. STORAGE BOX**

**Separately lockable, for the separate storage of small quantities of chemicals in the cabinet.**

- The storage box must be placed on a shelf and is screwed to the side wall at the factory. The top shelf in the cabinet is used as standard for installation.

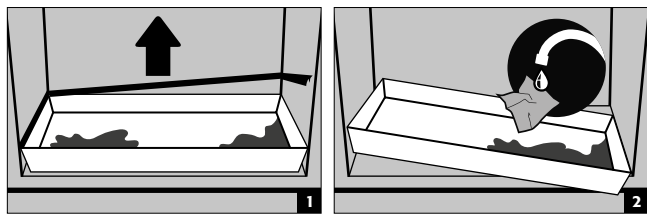




**5.8. LEAKS**



**PLEASE NOTE**  
Liquid in the bottom collecting sump / drawer and in the sump of pull-out tray, must be taken up immediately and using suitable means. The choice of the means is your own responsibility, depending on the leaked chemical.



**6. STORAGE**

**For passive storage of flammable liquids in work rooms (see point 1.3)**

- Vessels containing aggressive chemicals (acids/alkalis) are to be kept in special cabinets for acids and alkalis or on shelves for acids and alkalis.



**CAUTION:**  
Stored corrosive liquids can impair the function  
– of the shut-off devices for the supply and exhaust air  
– of self-closing in the event of fire

**Model Q90.195.120.ME.WDC**

- for passive storage of flammable metal powders in work rooms

**6.1. FIRE-PROTECTED LEAD-THROUGH**

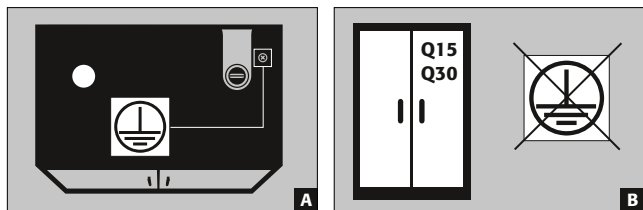
The optionally available fire protection lead-through enables pipelines, hoses and cables to be carried through in compliance with the tested fire resistance of the safety cabinet.

Please do not hesitate to contact us for information on the permissible lead-through areas, maximum permissible diameter of the cables and further information.

**7. EARTHING**



An earth connection may be necessary, depending on the customer-specific use of the safety storage cabinet. The decision regarding this is taken on the basis of a risk analysis by the customer.

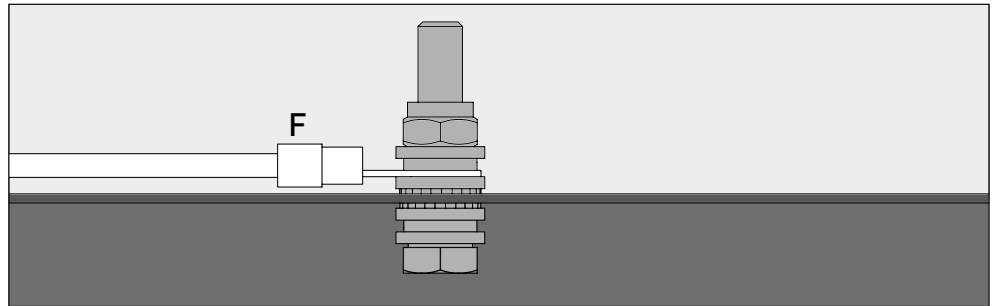
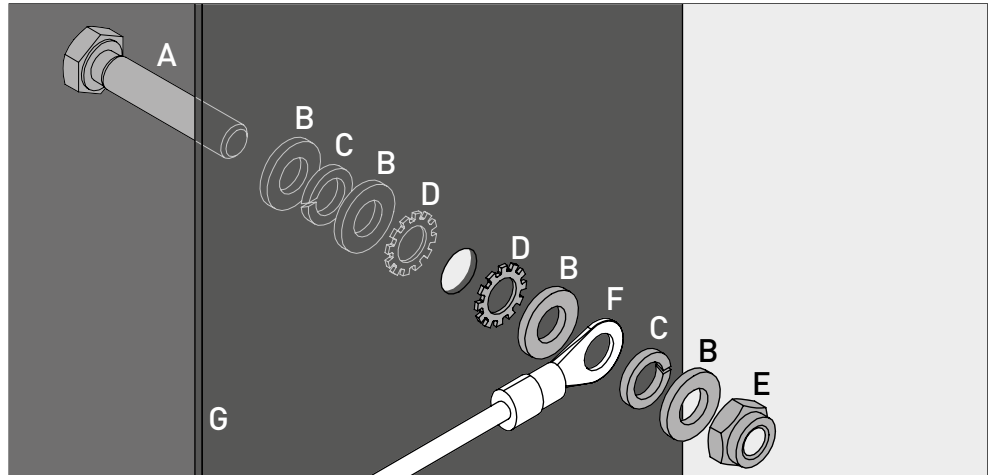


- **A:** headboard
- **B:** The Q15 / 30 models cannot be connected to an equipotential bonding system, as the cabinet body is not a conductive metal structure.

## 7.1. GROUND CONNECTION

All models have an earthing connection. The cabinet body (side and top panels) is metallically conductively connected to each other via the earthing connection. The earthing connection is prepared for the creation of the potential equalisation on site.

- **Q-LINE 90:** is enclosed with the product and must be mounted on site at the appropriate location on the headboard



Legende	
<b>A</b> 1 × screw M6×30	<b>E</b> 1 × nut with clamping part
<b>B</b> 4 × washer Ø 6,4	<b>F</b> earthing wire with ring cable lug (on-site connection)
<b>C</b> 2 × spring washer Ø 6,4	<b>G</b> metal part of the safety storage cabinet
<b>D</b> 2 × serrated lock washer Ø 6,4	

## 7.2. GROUNDING PREMIUM

**Only available in combination with cabinet for factory assembly.**

Optionally, the wardrobes are equipped as follows for an additional charge:

### Q-LINE type 90

Additional metallic conductive connection of the door panels, door handles and baseboard with the cabinet body

- Models with hinged door(s): Article 32505 (HFE.28688)
- Models with folding door(s): Article 35898 (HFE.31165)

## 7.3. GROUNDING THE INTERIOR

Optionally, the cabinets can be equipped with an earthing connection for the interior fittings at an extra charge.

### Q-LINE type 90

- Earthing lug inside with connection to the central earthing connection point on the cabinet ceiling incl. one earthing lead incl. pick-up terminal - article 28056 (HFE.11051)
- Additional earthing cable incl. tapping terminal for earthing another storage level - article 31710 (HFE.12704)

### Q-LINE type 30

- Earthing lug inside with connection to the central earthing connection point on the cabinet ceiling incl. one earthing lead incl. pick-up terminal - article 34536 (HFE.30170)
- Additional earthing cable incl. tapping terminal for earthing another storage level - article 33987 (HFE.29665)

## 8. VENTILATION



### CAUTION

The fire protection valves near the supply and extraction air connections are safety and maintenance-relevant components.

In order to check the correct operation or to replace a defective element, please ensure that flexible connecting hoses or sliding pieces are used to connect to an extraction system in order to ensure simple dismounting and re-mounting of the extraction air connection.

- If installed on an exhaust system, a check must be carried out to ensure proper connection to the system (e.g. using a smoke tube)
- All models can be connected to a technical exhaust system via the exhaust connector. Please see the respectively applicable national regulations for the specified air recirculation rate, maximum pressure losses and exhaust air ducts.



If no mechanical ventilation is connected, the immediate vicinity or the interior of the cabinet may be a potentially explosive atmosphere, or hazardous concentrations may build up. In such cases, the user should comply with national regulations and perform labeling on the cabinet.

## 9. FIRE - DISPOSAL

### 9.1. OPENING THE CABINET AFTER THE FIRE



### ATTENTION:

**Only authorised personnel (e.g. fire brigade) may open the cabinet!**

Depending upon the duration of the fire an ignitable vapour/air mixture may have formed; therefore remove all sources of ignition within a 10 metre radius of the cabinet before opening it.

Use only spark-free tools !

Open the cabinets with extreme caution !

### 9.2. DISPOSAL



The models can be disposed of once they have been dismantled and the materials sorted.

## 10. SAFETY CHECKS

### 10.1. IN GENERAL

As safety equipment the cabinets have to be checked for safety at least once per year. The next checking date can be taken from the service sticker on the outside of the door. This annual check can be carried out with the necessary care, and for securing your warranty claims in the case of fire, only by an authorised asecos employee (refer also to our service brochure regarding this).

**In addition, we recommend that you carry out a daily and monthly functional check:**

#### **Daily functional check**

- applies to the spill containment sumps (collect and remove any leakages)

#### **Monthly functional check**

- perfect function of the doors:
  - hinges
  - locking system
  - door closer
  - door open arrest system
- correct seating and condition of the fire protection seals

**Case of damage**

In case of damage please contact your dealer in order to have the cabinet repaired using original spare parts. The cabinets can be cleaned with a mild household cleaner and a soft cloth.

**10.2. WEARING PARTS**

Various safety-related components of the safety storage cabinet are wearing parts and must be replaced at regular intervals by asecos Service. A list of the parts affected for your safety cabinet is available on request from [service@asecos.com](mailto:service@asecos.com).



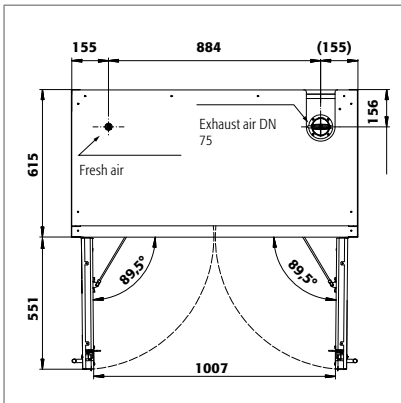
**CONTACT:**

In the case of defects or complaints about our products (within and also after the warranty period), and for requesting safety checks or taking out a service contract, please contact our service hotline on:

Tel: +44 1785 22 70-90 | [info@asecos.co.uk](mailto:info@asecos.co.uk) (for great Britain and Ireland)

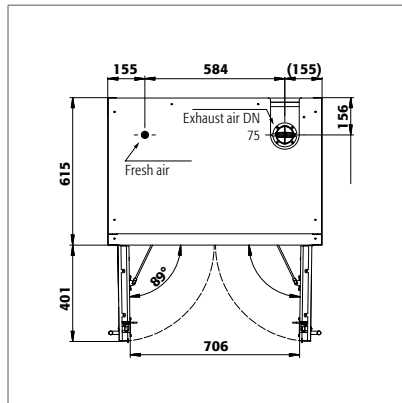
Tel: +49 1805 92 20 92 | [service@asecos.com](mailto:service@asecos.com) (international)

**11. TECHNICAL DRAWING**



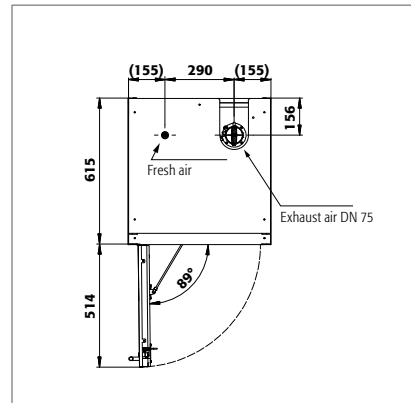
Q90.195.120  
Q90.195.120.MM  
Q90.195.120.FU.WDAS  
Q90.135.120

Q90.195.120.MV  
Q90.195.120.WDAC  
Q90.195.120.ME.WDC



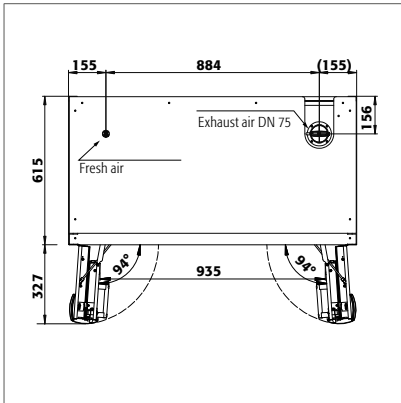
Q90.195.090  
Q90.195.090.FU.WDAS

Q90.195.090.WDAC

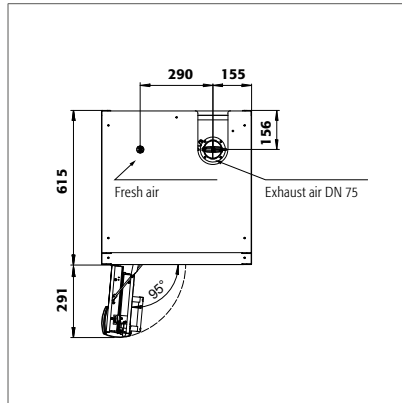


Q90.195.060  
Q90.195.060.WDAC  
Q90.195.060.FU.WDAS

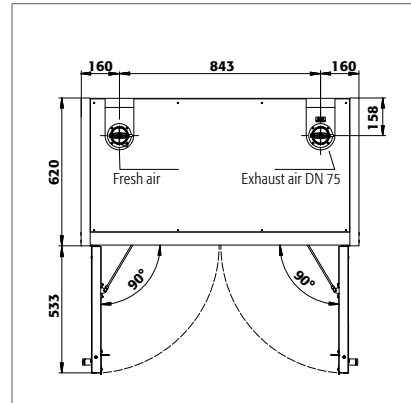
Q90.195.060.R  
Q90.195.060.WDACR  
Q90.195.060.FU.WDASR



Q90.195.120.FD

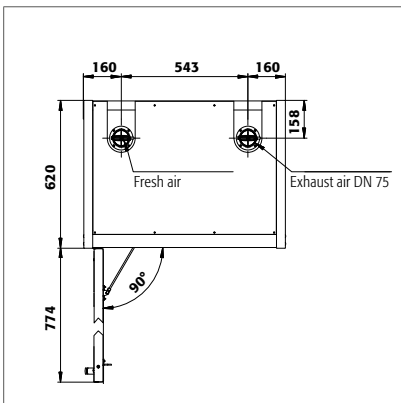


Q90.195.060.FD



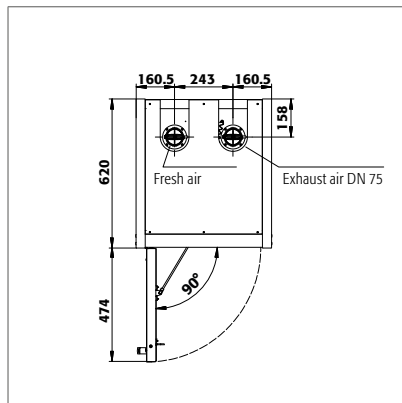
Q30.195.116  
Q15.195.116

Q30.195.116.FU.WDAS



Q30.195.086.WD  
Q30.195.086.WDFW  
Q30.195.086.FU.WDASR

Q30.195.086.WDR  
Q30.195.086.FU.WDAS



Q30.195.056  
Q30.195.056.FU.WDAS  
Q15.195.056

Q30.195.056.R  
Q30.195.056.FU.WDASR  
Q15.195.056.R

## 12.1. TABLE WITH TECHNICAL DATA

The surface load is calculated by dividing the total weight of the cabinet (empty cabinet plus load) by its loading area. This is calculated by multiplying the width of the cabinet by the depth (sum of the depth of the cabinet and 1000 mm of space in front of it). The specification of the surface load in the operating instructions is a theoretical value, as the specification of the load represents the maximum permissible value for the cabinet construction. The calculation of the individual surface load must always be based on the actual load (weight of the interior fittings and weight of the stored containers).

### EXAMPLE of the theoretical surface load calculation model Q90.195.120:

<b>Weight of cabinet</b>	424 kg
<b>Load:</b>	600 kg
<b>Working area:</b>	1200 mm × (615+1000) mm
<b>Calculation:</b>	$\frac{424+600 \text{ kg}}{1,2 \text{ m} \times 1,615 \text{ m}} = \frac{1024 \text{ kg}}{1,938 \text{ m}^2} = 529 \text{ kg/m}^2$

### Key for "Technical data" table

- |                                 |  |
|---------------------------------|--|
| 1 Dimensions W x D x H external | 5 Maximum load (kg)  |
| 2 Internal dimensions W x D x H | 6 distributed load (kg/m <sup>2</sup> )                    |
| 3 type class                    | 7 Volume with 10 times air change (m <sup>3</sup> /h)      |
| 4 Weight of empty cabinet(kg)   | 8 Differential pressure (10 times air change EK5/AK4) (Pa) |

Q-LINE								
	1	2	3	4	5	6	7	8
Q90.195.120	1193 x 615 x 1953	1050 x 522 x 1647	90	424	600	531	9	5
Q90.195.120.MV	1193 x 615 x 1953	left: 450 x 522 x 1647 right: 450 x 522 x 1647	90	454	600	595	9	5
Q90.195.120.MM	1193 x 615 x 1953	all compartments: 450 x 522 x 810	90	460	600	531	9	5
Q90.195.120.WDAC	1193 x 615 x 1953	1050 x 522 x 1647	90	424	600	531	9	5
Q90.195.120.FD	1193 x 615 x 1953	1050 x 522 x 1647	90	424	600	531	9	5
Q90.195.120.FU.WDAS	1193 x 615 x 1953	1050 x 522 x 1647	90	424	600	531	9	5
Q90.195.120.ME.WDC	1193 x 615 x 1953	1050 x 522 x 1647	90	424	600	531	9	5
Q90.195.090	893 x 615 x 1953	750 x 522 x 1647	90	343	600	654	6	5
Q90.195.090.WDAC	893 x 615 x 1953	750 x 522 x 1647	90	343	600	654	6	5
Q90.195.090.FU.WDAS	893 x 615 x 1953	750 x 522 x 1647	90	343	600	654	6	5
Q90.195.060	599 x 615 x 1953	450 x 522 x 1647	90	265	600	894	4	5
Q90.195.060.R	599 x 615 x 1953	450 x 522 x 1647	90	265	600	894	4	5
Q90.195.060.WDAC	599 x 615 x 1953	450 x 522 x 1647	90	265	600	894	4	5
Q90.195.060.WDACR	599 x 615 x 1953	450 x 522 x 1647	90	265	600	894	4	5
Q90.195.060.FD	599 x 615 x 1953	450 x 522 x 1647	90	265	600	894	4	5
Q90.195.060.FU.WDAS	599 x 615 x 1953	450 x 522 x 1647	90	265	600	894	4	5
Q90.195.060.FU.WDASR	599 x 615 x 1953	450 x 522 x 1647	90	265	600	894	4	5
Q90.135.120	1193 x 615 x 1353	1050 x 522 x 1047	90	424	600	531	6	5
Q30.195.116	1164 x 620 x 1947	1050 x 519 x 1626	30	240	600	445	9	10
Q30.195.116.FU.WDAS	1164 x 620 x 1947	1050 x 519 x 1626	30	240	600	445	9	10
Q30.195.086.WD	864 x 620 x 1947	750 x 519 x 1626	30	195	600	568	6	10
Q30.195.086.WDR	864 x 620 x 1947	750 x 519 x 1626	30	195	600	568	6	10
Q30.195.086.WDFW	864 x 620 x 1947	750 x 519 x 1626	30	212	600	531	6	10
Q30.195.086.FU.WDAS	864 x 620 x 1947	750 x 519 x 1626	30	195	600	568	6	10
Q30.195.086.FU.WDASR	864 x 620 x 1947	750 x 519 x 1626	30	195	600	568	6	10
Q30.195.056	564 x 620 x 1947	450 x 519 x 1626	30	146	600	816	4	10
Q30.195.056.R	564 x 620 x 1947	450 x 519 x 1626	30	146	600	816	4	10
Q30.195.056.FU.WDAS	564 x 620 x 1947	450 x 519 x 1626	30	146	600	816	4	10
Q30.195.056.FU.WDASR	564 x 620 x 1947	450 x 519 x 1626	30	146	600	816	4	10
Q15.195.116	1164 x 620 x 1947	1050 x 519 x 1626	15	230	600	440	9	10
Q15.195.056	564 x 620 x 1947	450 x 519 x 1626	15	140	600	810	4	10
Q15.195.056.R	564 x 620 x 1947	450 x 519 x 1626	15	140	600	810	4	10

## 12.2. TABLE OF LOAD CAPACITIES AND STORAGE CAPACITIES FOR STORAGE LEVELS

### Legend for "Storage capacities" table



Load capacity (kg) of storage levels



Capacity (liters) of the storage levels



Maximum container volume in the cabinet (ltr.)



Maximum container volume in the cabinet (ltr.)



Maximum storage capacity in the cabinet or storage compartment (liters)

Information on storage levels													Cabinet Specifications								
Interior equipment	1 shelf 2 tray shelf 3 metal-free tray shelf 4 grid as storage level								5 perforated insert 6 drawer behind door 7 heavy-duty drawer 8 disposal drawer					9 bottom collecting sump 10 metal-free bottom collecting sump							
	1	2	3	4	5	6	7	8	2	3	6	7	8	9	10	9	10	9	10		
Q90.195.120	75	150	50	120	75   135	60	100		33	33	29	66		33   55	33	30   50	30	330   550	330		
Q90.195.120.MV	75	150	50		75	25		50	22   11,5	11	4,5		7,5	11   22   33	11	10   20   30	10	110   220   330	110		
Q90.195.120.MM	75	150	50		75	25		50	22   11,5	11	4,5		7,5	11   22   33	11	10   20   30	10	110   220   330	110		
Q90.195.120.WDAC	75	150	50	120	75   135	60	100		33	33	29	66		33   55	33	30   50	30	330   550	330		
Q90.195.120.FD	75	150	50	120	75   135	60	100		33	33	29	66		33   55	33	30   50	30	330   550	330		
Q90.195.120.FU.WDAS	75				75									33   55	33	30   50	30	330   550	330		
Q90.195.120.ME.WDC				120										33		30		330			
Q90.195.090	75	150	50		75	60	100		22   23,5	22	19	45		22	22	20	20	220	220		
Q90.195.090.WDAC	75	150	50		75	60	100		22   23,5	22	19	45		22	22	20	20	220	220		
Q90.195.090.FU.WDAS	75	150			75				22   23,5					22	22	20	20	220	220		
Q90.195.060	75	150	50		75	25		50	22   11,5	11	4,5		7,5	11   22   33	11	10   20   30	10	110   220   330	110		
Q90.195.060.R	75	150	50		75	25		50	22   11,5	11	4,5		7,5	11   22   33	11	10   20   30	10	110   220   330	110		
Q90.195.060.WDAC	75	150	50		75	25		50	22   11,5	11	4,5		7,5	11   22   33	11	10   20   30	10	110   220   330	110		
Q90.195.060.WDACR	75	150	50		75	25		50	22   11,5	11	4,5		7,5	11   22   33	11	10   20   30	10	110   220   330	110		
Q90.195.060.FD	75	150	50		75	25		50	22   11,5	11	4,5		7,5	11   22   33	11	10   20   30	10	110   220   330	110		
Q90.195.060.FU.WDAS	75	150			75				22   11,5					11   22   33	11	10   20   30	10	110   220   330	110		
Q90.195.060.FU.WDASR	75	150			75				22   11,5					11   22   33	11	10   20   30	10	110   220   330	110		
Q90.135.120	75	150	50	120	75   135	60	100		33	33	29	66		33   55	33	30   50	30	330   550	330		
Q30.195.116	75	150	50	120	75   135	60	100		33	33	29	66		33   55	33	30   50	30	330   550	330		
Q30.195.116.FU.WDAS	75				75									33   55	33	30   50	30	330   550	330		
Q30.195.086.WD	75	150	50		75	60	100		22   23,5	22	19	45		22	22	20	20	220	220		
Q30.195.086.WDR	75	150	50		75	60	100		22   23,5	22	19	45		22	22	20	20	220	220		
Q30.195.086.WDFW	75	150	50		75	60	100		22   23,5	22	19	45		22	22	20	20	220	220		
Q30.195.086.FU.WDAS	75	150			75				22   23,5					22	22	20	20	220	220		
Q30.195.086.FU.WDASR	75	150			75				22   23,5					22	22	20	20	220	220		
Q30.195.056	75	150	50		75	25		50	22   11,5	11	4,5		7,5	11   22   33	11	10   20   30	10	110   220   330	110		
Q30.195.056.R	75	150	50		75	25		50	22   11,5	11	4,5		7,5	11   22   33	11	10   20   30	10	110   220   330	110		
Q30.195.056.FU.WDAS	75	150			75				22   11,5					11   22   33	11	10   20   30	10	110   220   330	110		
Q30.195.056.FU.WDASR	75	150			75				22   11,5					11   22   33	11	10   20   30	10	110   220   330	110		
Q15.195.116	75				75									33		30		330			
Q15.195.056	75				75									22		20		220			
Q15.195.056.R	75				75									22		20		220			



#### **asecos GmbH**

Sicherheit und Umweltschutz  
Weiherfeldsiedlung 16-18  
DE-63584 Gründau

📞 +49 6051 92200  
☎ +49 6051 922010  
@ info@asecos.com

#### **Asecos BV**

Veiligheid en milieubescherming  
Christiaan Huygensweg 4  
NL-2408 AJ Alphen a/d Rijn

📞 +31 172 506476  
☎ +31 172 506541  
@ info@asecos.nl

#### **asecos SARL**

Sécurité et protection de l'environnement  
7 rue du Pré Chaudron  
FR-57070 Metz

📞 +33 3 87 78 62 80  
@ info@asecos.fr

#### **asecos S.L.**

Seguridad y Protección del  
Medio Ambiente  
C/ Calderí, s/n – Ed. CIM Vallés, Planta 11  
08130 – Santa Perpètua de Mogoda  
Barcelona

📞 +34 935 745911  
☎ +34 935 745912  
@ info@asecos.es

#### **asecos Ltd.**

Safety and Environmental Protection  
Profile House  
Stores Road  
Derby, Derbyshire  
DE21 4BD

📞 +44 1332 415933  
@ info@asecos.co.uk

#### **asecos**

Safety and Environmental Protection Inc.  
c/o Schumann Burghart LLP  
1 Penn Plaza, Suite 4440  
New York, NY 10119, USA

📞 +1 (917) 362 5014  
☎ +49 6051 922010  
@ info@asecos.com

#### **asecos Schweiz AG**

Sicherheit und Umweltschutz  
Gewerbe Brunnmatt 5  
CH-6264 Pfaffnau

📞 +41 62 754 04 57  
☎ +41 62 754 04 58  
@ info@asecos.ch

#### **asecos AB**

Säkerhet och miljöskydd  
Typsnittsgatan 4  
754 54 Uppsala

📞 +46 18 34 95 55  
@ info@asecos.se